

NDONDOMEKO YA CHIKONZERO CHOSAMALIRA NKHALANGO KUDERA LA CHANIKA

NKHALANGO YOSUNGIDWA YA NTCHISI

CHITHUNZI



Table of Contents

MAU OTHOKOZA 4

MAU ACHIDULE OGWIRITSIDWA NTCHITO MKATIMU OFUNIKA KUWADZIWA..... 5

MAU OYAMBA 6

1.1 Chithunzithunzi cha Buloko ya Chanika (Mapu a Buloko ya Chanika) 7

2.0 ULAMULIRO PA CHISAMALIRO CHA NKHALANGO 7

3.0 KUFOTOKOZERA ZA NKHALANGO 8

 3.1 KUFOTOKOZERA MWACHIDULE 8

 3.1.1 ZOMERA ZOSIYANASIYANA ZA M'DERALI 8

 3.1.2 MITUNDU YA DOTHI LOSIYANASIYANA 8

 3.2 MALIRE 8

 3.3 UMWINI WA MALO 8

 3.4 OGWIRITSA NTCHITO NKHALANGO 8

 3.5 NTCHITO ZA NKHALANGO ZAZIKULUZIKULU 8

4.0 TIMADERA TACHISAMALIRO CHA NKHALANGO (FMUs) 9

 4.1 ZOLINGA ZAZIKULUZIKULU ZOLUNJIKA KWENIKWENI DERA LOSAKOLOLEKA NDI LOKOLOLEKA M'NKHALANGO 10

 4.2 ZOLINGA ZOCHPERAPO ZOLUNJIKA KWENIKWENI DERA LOKOLOLEKA NDI LOSAKOLOLEKA M'NKHALANGO 11

5.0 ZOLINGA ZA CHISAMALIRO CHA NKHALANGO 11

 5.1 CHOLINGA CHACHIKULU 11

 5.2 ZOLINGA ZOCHPERAPO KOMA ZOLUNJIKA KWENIKWENI NTCHITO YA CHISAMALIRO CHA NKHALANGO 11

6.0 MALAMULO A CHISAMALIRO CHA PHINDU LOCHOKERA M'NKHALANGO 12

7.0 CHIKONZERO CHA KAGWIRIDWE KANTCHITO 16

 7.1 NDONDOMEKO YA M'MENE ANTHU AKHOZA KULONDERA/KUYENDERA NKHALANGO 22

 GOME 7.2 Chikonzero cha m'mene ntchito yolondera nkhalango idzayendere. 22

 GOME 7.3 Kauniuni wa ndondomeko zofunika kutsatidwa monga mwa chikonzero. Onani zili m'munsizi: 23

8.0 KUFOTOKOZERA NTCHITO YA CHIKONZERO CHA KAYENDETSEDWE KA ZINTHU ZOCHOKERA M'NKHALANGO PADERA- PADERA 24

8.1 NDONDOMEKO YA CHISAMALIRO CHA MITENGO YA NKHUNI 25

8.2NDONDOMEKO YA CHISAMALIRO CHA MITENGO YA MATABWA.....	26
8.3NDONDOMEKO YA CHISAMALIRO CHA MITENGO YA PHASO, NSICHI NDI ZINA.....	27
8.4NDONDOMEKO YA CHISAMALIRO CHA ZIPATSO	28
8.5 NDONDOMEKO YA CHISAMALIRO CHA MITENGO YA LUZI.....	29
8.6 NDONDOMEKO YA CHISAMALIRO CHA MANKHWALA AZITSAMBA	30
9.0CHIKONZERO CHA KUGAWANA KWA PHINDU LOCHOKERA MU ZINTHU ZA M'NKHALANGO.....	32
GOME 9.1 NDALAMA ZOTOLERA KUCHOKERA MADERA OSIYANASIYANA	32
10.0MFUNDO ZOKHUDZA NDALAMA.....	33
10.1GAWO LOYAMBA LA ZOFOTOKOZERA LOLEMBEDWAM'MAGOME.....	35
10.2 KULOWA NDI KUTULUKA KWA NDALAMA CHAKA NDI CHAKA.....	36
10.2.1GOME 2: CHIYEREKEZO CHA KULOWA NDI KUTULUKA KWA NDALAMA MU BULOKO YA NYANGA	36
10.2.3GOME 3: Kuonetsa chiwerengero cha phindu la zinthu zochoka m'timadera tating'onoting'ono tam 'nkhalango cha pa chaka	38
10.2.4GOME :4 Kuonetsa chiyerekezo chakutsogolo pa ndalama zolowa kuchokera ku ndalama za zilolezo chaka ndi chaka.....	39
11.0ZOFOTOKOZERA ZONSE ZIMENE ZALEMBEDWA	40
11.1MUTU WOYAMBA: MALAMULO A MGWIRIZANO WOSAMALIRA LIMODZI BULOKO YA CHANIKA	40
11.2NTCHITO ZA BUNGWE LOYENDESA ZANKHALANGO/AUDINDO.....	41
11.3NTCHITO ZA MAMEMBALA OSANKHIDWA	41
11.4KUCHOTSEDWA KWA A PAUDINDO (MAMEMBALA.....	44
11.5MFUNDO ZOFUNIKA KUTSATA PAKATI PA AKAZI NDI AMUNA PAKUSASIYANA KWAO PAMAUDINDO AWO	46
11.6NDONDOMEKO YA NTCHITO YOSUNGA ZOLEMBEDWA ZONSE ZOKHUDZA NDALAMA ZOLOWA NDI ZOTULUKA.....	47
12.0KUUNIKIDWANSO KWA MALAMULO A BUNGWELI.....	47
12.1KUGAWANA PHINDU LA M'NKHALANGO	47
12.2KUYAMBA KUGWIRA NTCHITO KWA MALAMULO ANG'ONO A BULOKOYI.....	48
13.0MGWIRIZANO PACHISAMALIRO CHA NKHALANGO PAKATI PA BOMA NDI ANTHU	50
13.1MGWIRIZANO WOYENDESA LIMODZI NTCHITO ZACHISAMALIRO CHANKHALANGO	50
13.2CHIYAMBI, KUTALIKA KWA NTHAWI YAKE NDI KUTHA KWAKE KWA MGWIRIZANO	54
13.3NTCHITO YOLEMBA NDI KUIKA MALIRE.....	56

MAU OTHOKOZA

Tifuna kuthokoza kuchokera pansu pa mtima anthu talemba m'munsiwa kaamba ka zithandizo zimene adapereka pa nthawi yokonza ndondomeko ya chikonzero chosamalira nkhalango ya buloko ya Chanika. Anthuwa ndi a GVH Chanika, Gogo Kasakula ndi mamembala onse a m'dera la Chanika.

Tikuperekanso kuthokoza kwathu kwa onse ogwira ntchito zankhalango ku ofesi ya boma awa: Mrs T. Mboma (Ndovie) (DFO), Mr G. Misomali (ADFO), E. Mkanalumo Banda (FA), W. Banda, L. Sailota, P.Lungu (FLS), Mr Makowa (Driver), Mr W. Chikopa ndi S. Sibale (GPS/GIS) chifukwa cha mathandizo awo osiyanasiyana pa maluso awo komanso zina zofunikira.

Tikuthokozanso akuluakulu oona za nkhalango ochokera ku likulu la zankhalango awa R. W. S. Nyirenda (Mlangizi a za luso wa IFMSLP), T. S. Ketulo, chifukwa cha maluso ndi upangiri awo.

Tikuthokozanso bungwe la EU chifukwa chopeleka thandizo la ndalama pa ntchito zonse zokhazikitsira ndondomeko ya chikonzero chino.

MAU ACHIDULE OGWIRITSIDWA NTCHITO MKATIMU OFUNIKA KUWADZIWA

DFO	: Wamkulu wa zankhalango mu Boma (LA NTCHISI)
TA	: Mwinimtunda/ (chalo/ Gogo)
IFMSLP	: Ndongomeko yotukula kasamalidwe ka nkhalango kuti pakhale kupititsa patsogolo umoyo wa anthu.
EU	: Bungwe la Umodzi wa azungu
FMUs	: Midzi yoona za chisamaliro cha nkhalango
LFO	: Bungwe la kumudzi la zankhalango
FD	: Nthambi ya maofesi a zankhalango (Dipatimenti yoona zankhalango)
BMC	: Bungwe La Chigawo Chachikulu Losamalira za Nkhalango (BMC)
VH	: Mfumu ya m'mudzi
EPA	: Dera alilkulu la chionjezero pa chikonzekero cha ntchito za ulimi
LFMB	: Bungwe loyang'anira chisamaliro cha nkhalango
PCU	: Kagawo kolumikiza m'ndandanda wa zintchito zoyendetsera nkhalango
GVH	: Mfumu yoyang'anira midzi ingapo
NGO	: Bungwe limene silili la boma
VNRMC	: Bungwe la m'mudzi Loyang'anira zachilengedwe
FUG	: Gulu la Mamembala ogwiritsa ntchito nkhalango

MAU OYAMBA

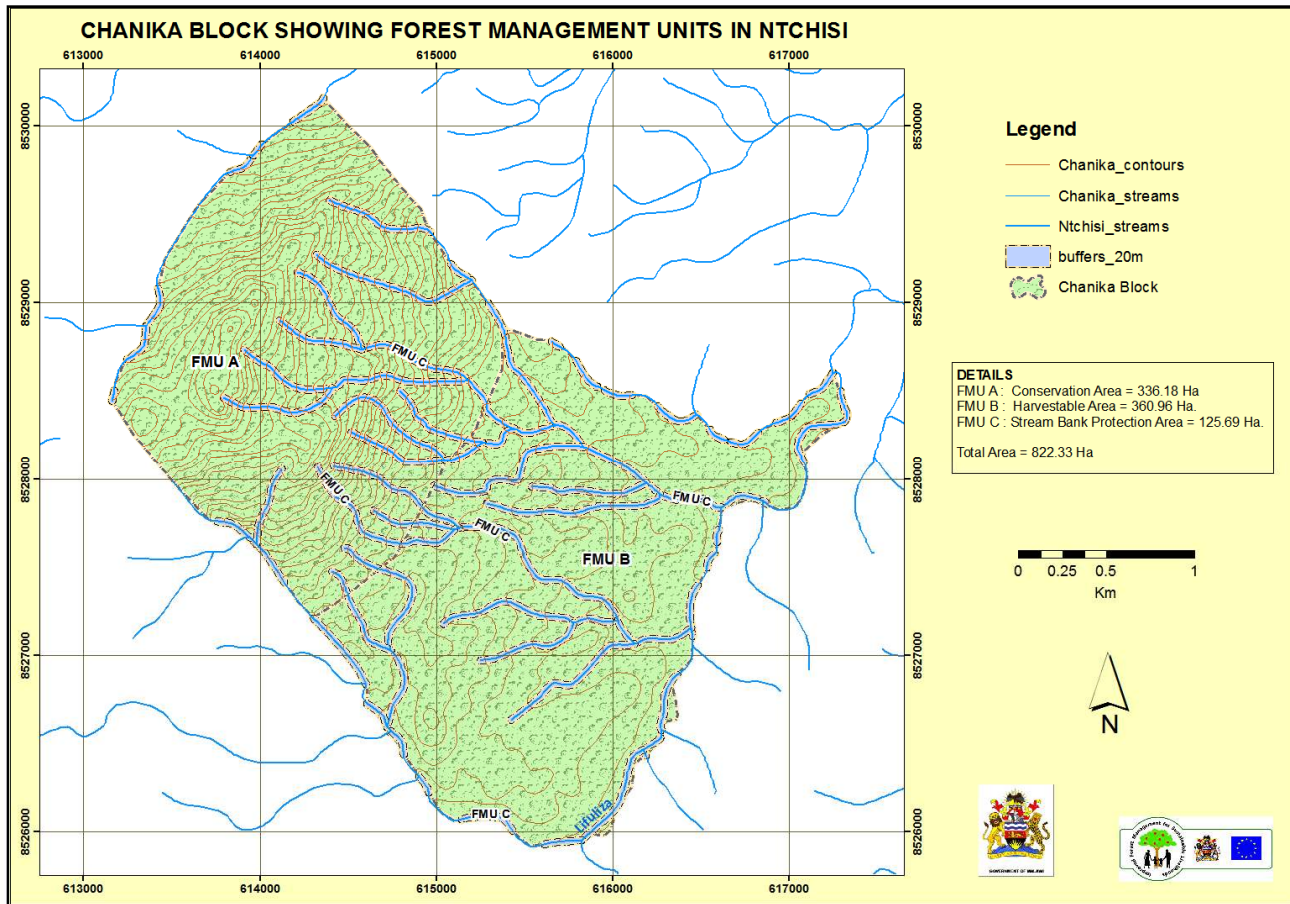
Ndondomeko ino ili kuphera mphongo kukambirana, kuunika, kudziwitsana ndi kufunsira ndiponso kukonzekera kumene kunalipo ndi anthu a dera la Chanika.

Ntchitoyi idatsogoleredwa ndi ogwira ntchito ku ofesi yoona za nkhalango ochokera ku Dipatimenti yoona za nkhalango. Cholinga chake ndi kupatsa mphamvu anthu a m'dera la GVH Chanika kupanga chiganizo ndi kutenga udindo komanso kupititsa patsogolo umodzi pa chitetezo, chisamaliro ndi kugwiritsa ntchito mosamala zinthu zonse zochokera m'nkhalango ya mu Buloko ya Chanika kuti adzapezenso zina mtsogolo.

Izi ndi zogwirizana ndi mfundo ya zankhalango ya boma laMalawi imene idakhazikitsidwa m'chaka cha 1996. Mfundoyi imanenetsa za kufunika kopatsaeni dera udindo waukulu wosamalira nkhalango ndi kukhala ndi mwayi womagwiritsa ntchito mitengo ndi zonse za m'nkhalangomo.

Ndondomeko yokonzekera, kudziwitsana ndi kufunsira, komanso kukambirana pachikonzero chosamalira nkhalangoyi idavomerezedwa ndi anthu onse okhudzidwa m'derali. Ntchito yonseyi anthu amatengapo mbali ndi cholinga chokhazikitsa kusabisirana pa zochitika zonse, kuti chikonzekero chikhale chofuna anthu komanso kuti onse akalandire maudindo mosaona kuti ndi mkazi kapena mwamuna. Ndondomekoyi imakhazikitsa malamulo oyenera ku anthu a derali ndiponso malamulo amene ndi osavuta kutsatira kuti athandize pa chitetezo ndi chisamaliro cha ntchito yoona za nkhalango m'dera la Chanika komanso kuti pakhale phindu la lero ndiponso la mtsogolo.

1.1 Chithunzithunzi cha Buloko ya Chanika (Mapu a Buloko ya Chanika)



2.0 ULAMULIRO PA CHISAMALIRO CHA NKHALANGO

Ndondomeko ya chikonzero chosamalira nkhalangoyi idzayendetsedwa ndi bungwe la Chanika BMC mothandizidwa ndi ofesi yoona zankhalango.

Bungwe la m'mudzi Loyang'anira zachilengedwe lidalembetsedwa ndipo limadziwika kuti ndi Bungwe la kumudzi lazankhalango (LFO) ndipo lidapatsidwa mphamvu ndi lamulo lovomerezedwa ndi Boma pa dera lonse la ulamuliro wawo limene lidapatsidwa kwa iwo kuti ayang'anire ndi kusamalira. Bungwe la m'mudzi Loyang'anira zachilengedwe lidzaonetsetsa kuti chikonzerochi chikutsatiridwa nthawi zonse. Pali midzi isanu ndi umodzi (6) m'dera la GVH Chanika ndipo midzi yake ndi Chanika, Jumachanga, Simatundu, Kambewa, Kwakwatuka, ndi Magulu. Mabanja onse mwa GVH Chanika ndi 65 (Makumi asanu ndi limodzi kudza

mphambu zisanu) ndipo ndi amene ayenera kusamalira limodzi Buloko ya Chanika ndi a nthambi yoona za nkhalango.

3.0KUFOTOKOZERA ZA NKHALANGO

3.1KUFOTOKOZERA MWACHIDULE

Buloko ya nkhalango ya Chanika imapedzeka pa mtunda wa makilomita 45 (makumi anayi kudza mphambu zisanu) kumadzulo kwa boma la Ntchisindipo ndi Mbali imodzi ya nkhalango yongosungidwa ya Ntchisi. Bulokoyi ndi yaikulu mahekitala 822.33 ndipo ili m'dera la GVH Chanika, mfumu yaikulu Kasakula m'boma la Ntchisi.

3.1.1 ZOMERA ZOSIYANASIYANA ZA M'DERALI

M'nkhalango ya m'dera la Chanika ili ndi mitengo yambiri ya mtudu wa Mseza komanso Mombo (*brachystegia species*). Mitunduinaya mitengo imene ikupezekanso ndi monga Thombozi, Sanga komanso Msoko.

3.1.2 MITUNDU YA DOTHI LOSIYANASIYANA

Dothi lake kwenikweni ndi dothi la makande koma lamchenga.

3.2 MALIRE

Kum'mawa bulokoyi idachita malire ndi buloko ya Kasakula pamenekumadzulo bulokoyi idachita malire ndi mtsinje wa Lifuliza ndipo kumpoto kwake idachita malire ndi buloko ya Chenthe.

3.3 UMWINI WA MALO

Umwini wosamalira nkhalango zosungidwa m'Malawi uli m'manja mwa boma la Malawi ndipo limatengapo mbali ya umwiniwu pa nkhalango yosungidwa ya Ntchisi. Chifukwa cha mgwirizano pa chisamaliro cha nkhalango ndi anthu, boma ndi anthu onse adzakhala ndi udindo ndi phindu lofanana lochokera m'nkhalango.

3.4 OGWIRITSA NTCHITO NKHALANGO

Anthu onse ochokera kwa a GVH Chanika ali mwayi ogwiritsa ntchito nkhalangoyi moyambirira. Anthu onse ochokera midzi yozungurira bulokoyi adzakhala ndi mwayi wopeza zinthu za m'nkhalangoyi kudzera mwa bungwe loyang'anira nkhalango (BMC) imene idzapereka zilolezo zoyenerera katundu wochokera m'nkhalango amene munthu adzafune kupeza m'nkhalangomo.

3.5 NTCHITO ZA NKHALANGO ZAZIKULUZIKULU

Buloko imeneyi ndi yofunikira popeza imapereka mwayi kwa ogwiritsa ntchito nkhalango kupeza zinthu zochokera m'nkhalango mosalekeza komanso mosaziononga kuti azizipezabe. Zina mwa zinthuzi ndi nkhu,

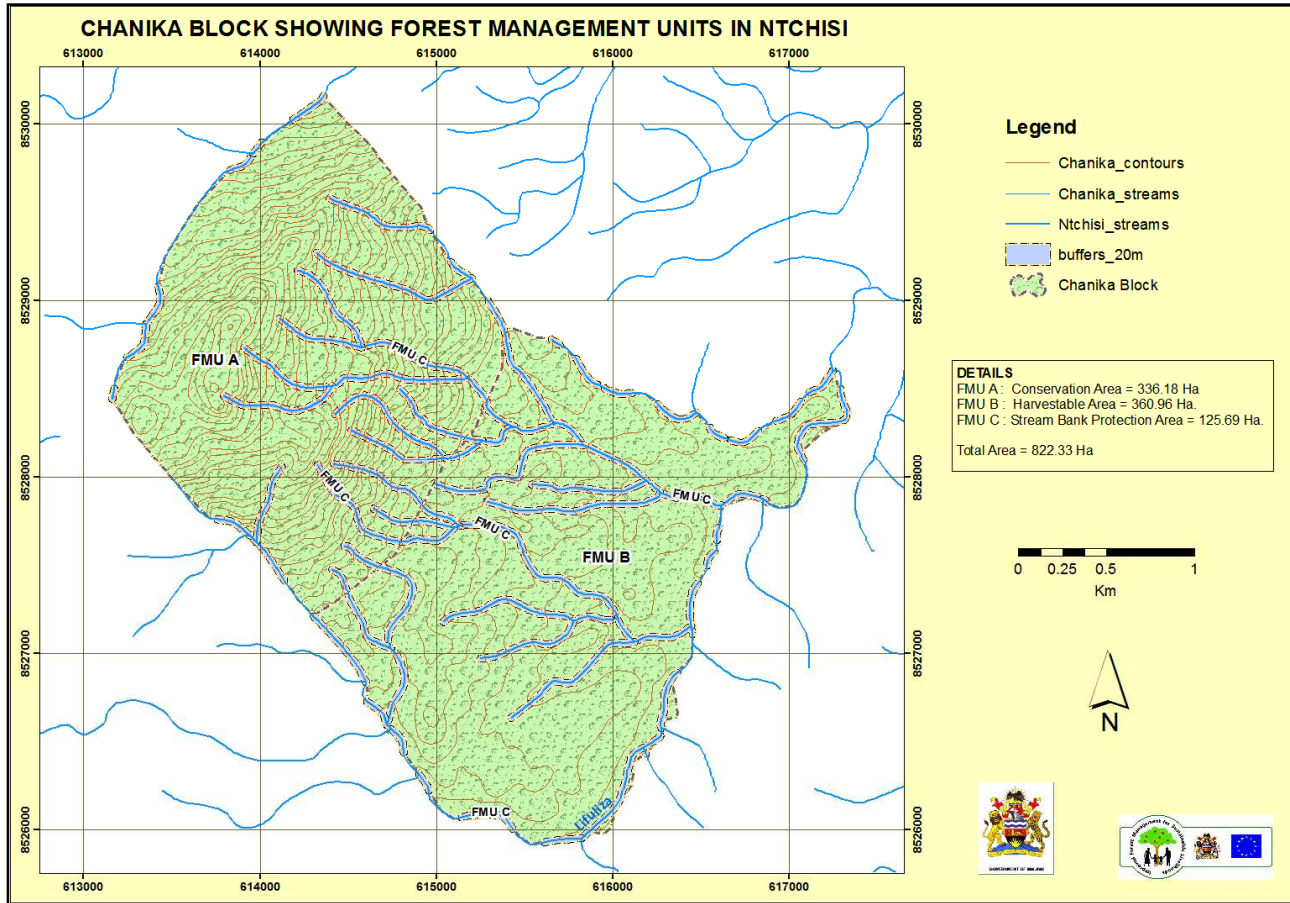
matabwa, phaso, nsichi, ndawala, luzi, mankhwala a zitsamba komanso bowa. Ngakhale zili chomwecho pamwambapa buloko ya nkhalangoyi imapangitsa kuti mvula isamavute m'derali komanso kupangitsa kuti madzi aziyenda chaka chonse m'mitsinje. Madziwa amagwiritsidwa ntchito yothirira zomera zosiyanasiyana. Pa chifukwa ichi onse ogwiritsa ntchito nkhalangoyi ayenera kuloledwa ndi kupatsidwa mphamvu ndi a bungwe la Chanika BMC popatsidwa chilolezo.

4.0 TIMADERA TACHISAMALIRO CHA NKHALANGO (FMUs)

Buloko ya Chanika ili ndi magawo atatu; FMU 1, FMU 2 ndi FMU 3

Gawo loyamba (FMU1), ndi dera limene lili mphepete mwa mitsinje ndipo ndilalikulu mahekitala okwana 125.69. Gawo la chiwiri (FMU 2) ndi dera limene lili ndizachilengedwe zimene zili zosavuta kuwonongeka, delali limaphatikizapo zigwembe komanso malo otsungira madzi ndipo ili ndi mahekitala okwana 336.18. Gawo lachitatu (FMU 3) ndi dera limene lili ndi mitengo yakathithi komanso ya mitundu ndi misinkhu yosiyanasiyana. Ili ndilo dera limene anthu azidzatengako mitengo, nkhu, mipini, mankhwala ndi zina zochokera ku mitengo komanso zina zochokera m'nkhalango. Ndipo ndi yaikulu mahekitala 360.96

MAPU OSONYEZA ZIGAWO ZOSAMALIRA NKHALANGO YA CHANIKA



4.1 ZOLINGA ZAZIKULUZIKULU ZOLUNJIKA KWENIKWENI DERA LOSAKOLOLEKA NDI LOKOLOLEKA M'NKHALANGO

Zolinga zazikuluzikulu za malo osakololeka (FMU 1) ndi zimene zili m'munsizi

- Kuteteza nthaka yonse yozungulira imene ndi gwero la mitsinje komanso imene imapereka madzi.
- Kuti pakhale chisamaliro chokwana pa udzu ndi msipu wosiyanasiyana umene umamera m'mphepete mwa mitsinje.

Zolinga zazikuluzikulu za malo okololeka (FMU 2) ndi zimene zili m'munsizi

- c) Kutukula miyoyo ya anthu okhala mwa GVH Chanika popeza zinthu zogulitsa zochokera m'nkhalango.
- d) Kuti anthu azipanga zinthu zooneka bwino pogwiritsa ntchito mitengo ndi zina zochokera m'nkhalango.

4.2 ZOLINGA ZOCHPERAPO ZOLUNJIKI KWENIKWENI DERA LOKOLOLEKA NDI LOSAKOLOLEKA M'NKHALANGO

Zolinga za dera limene anthu sangakololeko

- e) Kuteteza udzu ndi zomera zobiriwira za m'mphepete mwa timitsinje ndi cholinga chofuna kuti madzi aziyenda chaka chonse kuti anthu azigwiritsa ntchito pa ulimi wa mthirira ndi ntchito zina za makomo.
- f) Kuteteza kukokoloka kwa nthaka imene ili malo ozyolika [opendekeka kwambiri]
- g) Kulimbikitsa chitetezo ndi chisamaliro cha nyama za m'tchire ndi maluwa a m'thengo.

Zolinga za dera limene anthu akhoza kukololako

- Kupititsa patsogolo ntchito yotulutsa zinthu zabwino zochokera m'nkhalango kuti anthu azigwiritsa ntchito m'makomo ndi zina zokagulitsa.

5.0 ZOLINGA ZA CHISAMALIRO CHA NKHALANGO

5.1 CHOLINGA CHACHIKULU

- Cholinga chachikulu ndiko kupereka chisamaliro cha nkhalango pamodzi kuti pakutero padzakhalenso kugwiritsa bwino ntchito zinthu zonse zochokera m'nkhalango, mosungako zina kuti tsiku lina zidzagwirensa ntchito m'makomo.
- Kupititsa patsogolo chisamaliro cha zinthu zochokera m'nkhalango ndi kutukula miyoyo ya anthu ozungulira nkhalangoyi.

5.2 ZOLINGA ZOCHPERAPO KOMA ZOLUNJIKI KWENIKWENI NTCHITO YA CHISAMALIRO CHA NKHALANGO

- a) Kuti anthu apititse patsogolo ntchito yopanga zinthu zofunikira zochokera m'nkhalango, monga phaso, ndawala, nsichi, matabwa, nsungwi ndi nkhu komanso zopangidwa kuchokera ku zinthu zina za m'nkhalango zimene simitengo ayi.
- b) Kuti pakhale chisamaliro chokwanira pa mitengo ndi zomera zimene zimaphukirabe zikadulidwa.

- c) Kuti anthu akwanitse kupereka chisamaliro komanso kuti pakhale kukolola ndi kugwiritsa ntchito zinthu zochokera ku mitengo ndi ku zinthu zina zimene sizichokera ku mitengo.
- d) Kuti anthu azipeza pafupi ndi mosavutikira mathandizo a zinthu zochokera m'nkhalango kuti anthu azigwiritsira ntchito pakhomo komanso kuti azikagulitsa.
- e) Kuonetsetsa kuti eni derali akupeza phindu lofunikadi.

6.0MALAMULO A CHISAMALIRO CHA PHINDU LOCHOKERA M'NKHALANGO

Malamulo ano adakonzedwa kuti anthu a m'derali azitengapo gawo pa chisamaliro cha Buloko ya Chanika pa chitetezo chake, kuyendetsa kwake ndi kagwiritsidwe ntchito kake ka nkhalangoyi

NO.	Malamulo okhudza mitengo ndi zina zochokera m'nkhalango	Kufotokozera katundu wochokera m'nkhalango	Zilango
1)	Kudula nkhu wopanda chilolezo chochokera ku Bungwe la kumudzi la zankhalango ndi kosalolekwa	Kudula nkhu wopanda chilolezo chochokera ku Bungwe la kumudzi la zankhalango ndi ntchito yoyang'aniridwa ndi Bungwe loyang'anira za nkhalango m'mudzi [Block Mgt. Board] mothandizidwa ndi ogwira ntchito za nkhalango ku Dipatimenti ya za nkhalango [FD staff].	Aliyense wopezeka wolakwa chifukwa chodula nkhu wopanda chilolezo chochokera ku Bungwe la kumudzi loona zankhalango adzalipira chindapusa chokwana MK1000.00 kapena mbuzi imodzi.
2)	Membala aliyense wa Bungwe la m'mudzi Loyang'anira za nkhalango adzayenera kutengapo gawo kupatula okhawa amene ndi	Ntchito za nkhalango zidzayang'aniridwa ndi Bungwe loyang'anira za nkhalango m'mudzi [Block Mgt. Board] mothandizidwa ndi ogwira ntchito za nkhalango ku Dipatimenti ya za	Aliyense wopezeka wolakwa chifukwa chokana kugwira nawo ntchito zosamalira nkhalango ya mudzi adzalipira chindapusa

	odwala, okalamba ndi olumala.	nkhalango [FD staff].	chokwana MK2000.00 pa tsiku limodzi logwira ntchito ndipo akalephera ayenera kuchotsedwa
3)	Palibe ndi m'modzi yemwe wololedwa kuyatsa moto kapena kuyambitsa moto m'dera la nkhalango ya mudzi wopanda chilolezo chochokera kwa a bungwe la BMC	Bungwe loyang'anira za nkhalango m'mudzi [BMC] mothandizidwa ndi ogwira ntchito za nkhalango ku Dipatimenti ya za nkhalango [FD staff] adzaonetsetsa udindo woyatsa moto kapena kuyambitsa moto kuteteza dera la nkhalango ku moto wachisawawa kuti uli m'manja mwawo	Aliyense wopezeka wolakwa chifukwa choyatsa moto wachisawawa kapena kuyambitsa moto wotere m'dera la nkhalangoli wopanda chilolezo chochokera kwa a bungwe la BMC adzalipira chindapusa cha MK20,000.00
4)	Palibe wololedwa kumanga kanyumba kalikonse kapena kena kalikonse m'nkhalango ya mudzi wopanda chilolezo chochokera ku Bungwe la kumudzi loona zankhalango	Bungwe loyang'anira za nkhalango m'mudzi [BMC] mothandizidwa ndi ogwira ntchito za nkhalango ku Dipatimenti ya za nkhalango [FD staff] adzaonetsetsa kuti palibe yemwe akumanga nyumba kapena kutenga kalikonse m'nkhalangoyi opanda chiloledzo	Aliyense wopezeka wolakwa chifukwa chomanga kena kalikonse m'nkhalango ya mudzi wopanda chilolezo chochokera ku Bungwe la kumudzi loona zankhalango adzalipira chinapusa chokwana MK20,000.00
5)	Kutola nkhuhi wopanda chilolezo chochokera ku Bungwe la kumudzi la	Bungwe la kumudzi loona zankhalango [BMC] lidzayang'anira katoledwe ka	Aliyense wopezeka wolakwa chifukwa chokatola nkhuhi wopanda

	zankhalango ndi kosaloledwa	nkhuni m'nkhalangoyi	chilolezo chochokera ku Bungwe la kumudzi la zankhalango adzalipira chindapusa chokwana MK1,000.00
6)	Palibe wololedwa kulima m'malo abwino m'nkhalango ya mudzi wopanda chilolezo chochokera ku Bungwe la kumudzi loona za nkhalango	Oona za chisamaliro cha nkhalango ndi okhawo amene amavomerezedwa kusamalira pa kulima m'nkhalangoyi koma ena onse nkosaloledwa	Aliyense wopezeka wolakwa chifukwa cholima m'nkhalango ya mudzi wopanda chilolezo chochokera ku Bungwe la kumudzi la zankhalango adzalipira chindapusa MK20,000.00
7)	Kudyetsa ziweto m'nkhalangoyi Kudzafunika kulolezedwa ndi Bungwe Loona zankhalango (BMC)	Mtengo wa ndalama pa chaka kuti anthu adyetsa ziweto zawo m'nkhalangoyi Kudzafunika kulipira K1,000.00	Aliyense wopezeka wolakwa chifukwa chodyetsa ziweto m'nkhalangoyi wopanda chilolezo chochokera ku Bungwe Loona zankhalango (BMC) adzalipira chindapusa chokwana MK20,000.00
8)	Palibe wololedwa kugwiritsa ntchito misampha yotchera nyama za m'thengo m'nkhalango yosungidwayi	Bungwe loyang'anira za nkhalango m'mudzi (BMC), eni dera mothandizidwa ndi ogwira ntchito za nkhalango ku Dipatimenti ya za nkhalango (FD staff) adzaonetsetsa kuti akukonza maulendo oyendera nkhalango	Aliyense wopezeka wolakwa chifukwa chotchera misampha nyama za m'thengo m'nkhalango yosungidwayi adzalipira chindapusa chokwana

		kuletsa otchera misamphawa	MK15,000.00
9)	Palibe wololedwa kukasaka nyama mu nkhalango ya mudzi wopanda chilolezo chochokera ku Bungwe la kumudzi la zankhalango	Bungwe loyang'anira za nkhalango m'mudzi (BMC), eni dera mothandizidwa ndi ogwira ntchito za nkhalango ku Dipatimenti ya za nkhalango (FD staff) adzaonetsetsa kuti akukonza maulendo oyendera nkhalango kuletsa osaka nyamawa	Aliyense wopezeka wolakwa chifukwa chosaka nyama mu nkhalango ya mudzi wopanda chilolezo chochokera ku Bungwe la kumudzi la zankhalango adzalipira chinapusa chokwana K10,000.00

7.0CHIKONZERO CHA KAGWIRIDWE KANTCHITO

Ntchito zalembedwa m'munsizi zizidzagwirika chaka chilichonse

No.	NTCHITO	ZOFUNIKIRA	UDINDO NDI WANDANI WOGWIRA NTCHITOYI	MALO AKE NDI KUTI	NTHAWI YAKE [MIYEZI]												
					Jan	Feb	M A r c h	M a y	J u n e	July	A u g u s t	O c t	No v	De c			
1.	Kupereka ziphaso zokazulira kapena kutolera bowa	Zolembera ndi buku la malisiti a zilolezo	BMC	Buloko Chanika	√	√	√										
2.	Kutantha moyambirira kuteteza nkhalango kuti isapsye ndi moto	Moto ndi makeni othiririra	BMC ndi a anthu onse a m'derali	Buloko Chanika					√								

7.1 NDONDOMEKO YA M'MENE ANTHU AKHOZA KULONDERA/KUYENDERA NKHALANGO

ZOCHITA	ZIGAWO
Kusamalira nkhalango mwa dongosolo	1 komanso 2
Kusamalira mphukira	1,2 ndi 3
Kutenthera nkhalango kusanaumitsitse	1 ndi 2
Kutenthera patalipatali kusanaumitsitse	1, 2 ndi 3
Kupatulirira ndi kukolola mwakasinthasinth	3
Kuweta njuchi	zigawo zonse zitatu

Kulondera nkhalango kuzidzachitika kawiri pa sabata ndipo anthu ochokera ku midzi yotsatira m'munsiyi adzatengapo gawo lolondera nkhalangoyi molumikizana ndi ogwira ntchito ku Dipatimenti yoona za nkhalango:

Midziyi ndi Chanika, Jumachanga, Kambewa, Kwakwatuke, Simatundu and Magulu

Gome 7.2 Chikonzero cha m'mene ntchito yolondera nkhalango idzayendere.

NO.	NTCHITO	UDINDO WA NDANI	KANGATI PA MASIKU ASANU NDI AWIRI	ZIZINDIKIRO ZOTSATIRA PAMAPETO PA NTCHITO ILIYONSE
1.	Kuletsa ocheka matabwa kwa iwo amene alibe chilolezo	Bungwe la Chanika BMC ndi ogwira ntchito za nkhalango ku ofesi ya boma	Kamodzi pa sabata	kuchuluka kwa matabwa amene alandidwa, kuchuluka kwa zida zimene zalandidwa, Kuchuluka kwa olakwira amene aweruzidwa,
2.	Kuletsa kutola nkhuhi opanda chilolezo	Bungwe la Nyanga BMC ndi ogwira ntchito za nkhalango ku ofesi ya boma	Kamodzi pa sabata	Kuchuluka kwa zida zogwiritsira ntchito zimene zalandidwa pa nthawi yoyendera nkhalango komanso kuchuluka kwa

				milandu imene yalembedwa m' buku
3.	Kuletsa kuotcha makala opanda chilolezo	Bungwe la Chanika BMC ndi ogwira ntchito za nkhalango ku ofesi ya boma	Kamodzi pa sabata	Kuchuluka kwa matumba a makala olandidwa, kuchuluka kwa mauvuni owotchera makala amene aonongedwa ndi kuchuluka kwa milandu imene yalembedwa m' buku.

7.3 KAUNIUNI (KALONDOLONDO) WA NDONDOMEKO ZOKHAZIKITSIDWA KUTI ZITSATIDWE MONGA MWA CHIKONZERO PANTCHITO YOLEMBEDWA M'MUNSIYI

GOME 7.3 Kauniuni wa ndondomeko zofunika kutsatidwa monga mwa chikonzero. Onani zili m'munsizi:

CHOLINGA	ZOFUNIKA KUUNIKIDWA	NJIRA ZOCHITIRA KAUNIUNI	ZIZINDIKIRO ZOTSATIRA PAMAPETO PA NTCHITO ILIYONSE	KODI NDI UDINDO WA NDANI	NTHAWI YOCHITIRA KAUNIUNI
Kuteteza mitengo ndi nthaka ku maderama amene magwero mitsinje kuzungulira derali	Kukula kwa dera lopanda chitetezo ndi kukula kwa malo amene ndi gwero la mitsinje kuzungulira derali	Kupanga maulendo okayendera ndi kukaonetsetsa bwinobwino zimene zikachitika m' nkhalangoyi	Kutetezedwa kwa kukololoka kwa nthaka ndi kupitiriza kwa Kuyenda kwa madzi m' mitsinje	Bungwe la Chanika BMC ndi ogwira ntchito za nkhalango ku ofesi ya boma	Nchito ya nthawi zonse

Kuteteza za chilengedwe zimene zili mphepete mwa mitsinje	Kuchuluka kwa mitengo mphepete mwa mitsinje	Kuonetsetsa (kuzukuta)	Kayendedwe ka madzi mitsinje nthawi zonse	Bungwe la Chanika BMC ndi ogwira ntchito za nkhalango ku ofesi ya boma	Nchito ya nthawi zonse
Kugulitsa zina mwa zinthu zochokera m'nkhalango mwadongotsolo ncholinga chotukula miyoyo ya anthu	Kupezeka kwa ndalama m'makomo zochokera m'nkhalango	Kuziwerenga ndi kuonetsetsa	Kupezeka kwa magulu osungitsako ndi kukongolako ndalama m'madera amene anthu akukhala	Bungwe la Chanika BMC ndi ogwira ntchito za nkhalango ku ofesi ya boma	Nchito ya nthawi zonse

Dera lokololako

Zinthu zambiri zochokera m'nkhalango ya Buloko ya Chanika zidzakololedwa m'timadera tating'onoting'ono motsatira kasinthatintha wa zaka 20 (makumi awiri) zilizonse kuti mitengo ndi zomera zina zonse za m'nkhalango ziphukirenso pofuna kudzagwiritsanso ntchito nthawi ina mtsogolo mwake.

Chisamaliro ndi kayendetsedwe ka dera lokololeka (FMU 2)

8.0 KUFOTOKOZERA NTCHITO YA CHIKONZERO CHA KAYENDETSSEDWE KA ZINTHU ZOCHOKERA M'NKHALANGO PADERA- PADERA

Buloko ya Chanikaili ndi Chiwerengero cha zinthu zambiri zochokera m'nkhalango. Zofunika kwambiri pa zinthu zochokera m'nkhalangoyi ndi nkhu. Palinsu katundu wina wosachokera ku mitengo ya m'nkhalango komabe chofunikira kwambiri ndi mankhwala azitsamba.

8.1 NDONDOMEKO YA CHISAMALIRO CHA MITENGO YA NKHUNI

- a) Phindu lochokera m'nkhalango ndi nkhuni. (Nkhuni ndi zofunikira kwambiri)
- b) Mitundu ya mitengo yofunika kwambiri ndi *Mseza, M'mbanga, Sanga, ndi Kadale*
- c) Zimafunikira motani nkhuni? Zimafunika kwambiri.
- d) Nkhuni zimapezeka motani? Zimapezeka kwambiri.
- e) Zovuta zake za nkhuni ndi njira zolakwika zimene anthu amatsata akafuna kupeza nkhuni m'nkhalango komanso moto wachisawawa umene umaononga mitengo yopereka nkunizo.

f) **Chisamaliro cha nkhalango**

- Kudula mitengo kudzachitika kuyambira mwezi wa juni mpaka Ogasiti
- Kutentha nkhalango koyambirira kudzachitika chaka ndi chaka.
- Mitengo idzadulidwa ndi kusiya zitsa zotalika mlingo wa 30cm (pafupifupi kutalika kwa lula m'modzi) kuchokera pa dothi.
- Kudula mitengo mochita kusankha mitundu ya mitengo kudzachitika mu madera okuloleka okhawo chaka chilichonse.

g) **MALO A NKHALANGO OLOLEDWA KUDULAKO MITENGO PA CHAKA**

Dera loyenera kudulako mitengo pa chaka ndi pafupifupi ma hekitala 18 motsatira kasinthesintha pa kadulidwe ka mitengo amene amakhalapo pa dera lokwana mahekitala 360.96 pa zaka makumi awiri aliwonse (zaka 20 zilizonse).

h) **ZILOLEZO ZA PHASO NDI MITENGO INA**

Onse olova m'nkhalango kukafuna ndi kukapeza mitengo, phaso, nkhuni ndi zina ayenera kukhala ndi chilolezo cholembedwa chochokera ku Bungwe lakumudzi loona zankhalango (BMC).

i) **NDALAMA ZOLIPIRA PA ZINTHU ZOCHOKA M'NKHALANGO**

Gome lili pamunsipa likuonetsa mitengo ya ndalama zofuna kulipira pa katundu aliyense wochokera m'nkhalango. Mitengo ya zinthu zochokera m'nkhalango ndi yosiyanasiyana dera ndi dera kotero siyofanana ndi mitengo ya kwa GVH Chanika.

Muyeso wake	Mtengo wolipira onse ochokera kwa GVH Chanika	Mtengo wolipira onse ochokera madera ena
Zonsezeka pa mutu (Mtolo)	K75.00	K200.00
Pa mlingo wa 1 mita	K1,000.00	K1,500.00
Zoikidwa pa njinga	K250.00	K500.00

8.2NDONDOMEKO YA CHISAMALIRO CHA MITENGO YA MATABWA

a) Phindu lochokera m'nkhalango ndi matabwa (Matabwa ndi ofunikira kwambiri)

(b) Mitundu ya mitengo yofunika kwambiri kugwiritsa ntchito matabwa ndi Mlombwa, Nakaledza ndi Msikidzi.

(c) Imafunikira motani mitengo ya matabwayi? Imafunika kwambiri.

(d) Mitengo ya matabwa imapezeka motani? Imapezeka chikatikati osati kwambiri.

(e) Zovuta zake za matabwa ndi njira zolakwika zimene anthu amatsata akafuna kupeza matabwa m'nkhalango, moto wachisawawa umene umaononga mitengo komanso kusowa kwa mitengo yofunikira.

(f) **Chisamaliro cha nkhalango**

a. Kudula mitengo kudzachitika kuyambira mwezi wa juni mpaka Ogasiti

b. Kutentha nkhalango koyambirira kudzachitika chaka ndi chaka.

c. Mitengo idzadulidwa ndi kusiya zitsa zotalika mlingo wa 30cm (pafupifupi kutalika kwa lula m'modzi) kuchokera pa dothi.

d. Kudula mitengo mochita kusankha mitundu ya mitengo kudzachitika mu madera okuloleka okhawo chaka chilichonse.

g) **MALO A NKHALANGO OLOLEDWA KUDULAKO MITENGO PA CHAKA**

h) Dera loyenera kudulako mitengo pa chaka ndi pafupifupi ma hekitala 18 motsatira kasinthisintha pa kadulidwe ka mitengo amene amakhalapo pa dera lokwana mahekitala 360.96 pa zaka makumi awiri aliwonse (zaka 20 zilizonse).

i) **ZILOLEZO ZOLOWERA MNKHALANGO**

Onse olowa m'nkhalango kukafuna ndi kukapeza mitengo ya matabwa kapena matabwa ayenera kukhala ndi chilolezo cholembedwa chochokera ku Bungwe lakumudzi loona zankhalango la BMC.

i) **NDALAMA ZOLIPIRA PA PHINDU LOCHOKA M'NKHALANGO**

Gome lili pamunsipa likuonetsa mtengo wa ndalama zofuna kulipira pa matabwa alionse ochokera m'nkhalangoyi.

Mtengo	Mtengo wolipira onse ochokera kwa GVH Chanika	Mtengo wolipira onse ochokera madera ena
Matabwa	K5,000.00/mtengo uliwonse wochekeka matabwa	K7,000.00

8.3NDONDOMEKO YA CHISAMALIRO CHA MITENGO YA PHASO, NSICHI NDI ZINA

- a) Phindu lochokera m'nkhalango ndi nsichi ndi phaso (Nsichi ndi phaso ndi zofunikira kwambiri)
- b) Mitundu ya mitengo yofunika kwambiri kugwiritsa ntchito matabwa ndi Msolo ndi Kadale.
- c) Imafunikira motani mitengoyi? Imafunika kwambiri.
- d) Mitengoyi imapezeka motani? Imapezeka mwachikatikati.
- e) Zovuta zake ndi njira zolakwika zimene anthu amatsata akafuna kupeza phaso, nsichi ndi zina m'nkhalangoyi komanso moto wachisawawa umene umaononga mitengo yopereka zinthuzi.

f) **Chisamaliro cha nkhalango**

- a. Kudula mitengo kudzachitika kuyambira mwezi wa juni mpaka Ogasiti
- b. Kutentha nkhalango koyambirira kudzachitika chaka ndi chaka.
- c. Mitengo idzadulidwa ndi kusiya zitsa zotalika mlingo wa 30cm (pafupifupi kutalika kwa lula m'modzi) kuchokera pa dothi.
- d. Kudula mitengo mochita kusankha mitundu ya mitengo kudzachitika ku madera okuloleka okhawa chaka chilichonse.

g) **MALO A NKHALANGO OLOLEDWA KUDULAKO MITENGO PA CHAKA**

Zipatso zizidzakololekwa m'nkhalango yonse ngati chiloledzo chaperekedwa kuchokera ku bugwe Loyang'anira nkhalango la mmudzi (BMC)

h) **ZILOLEZO ZOLOWERA MNKHALANGO**

Onse olowa m'nkhalango kukafuna ndi kukapeza mitengo, phaso, nkhu ni ndi zina ayenera kukhala ndi chilolezo cholembedwa chochokera ku Bungwe lakumudzi loona zankhalango la BMC.

i) **NDALAMA ZOLIPIRA PA PHINDU LOCHOKA M'NKHALANGO**

Gome lili pamunsipa likuonetsa mitengo ya ndalama zofuna kulipira pa katundu aliyense wochokera m'nkhalango. Mitengo ya zinthu zochokera m'nkhalango ndi yosiyanasiyana dera ndi dera kotero siyofanana ndi mitengo ya kwa GVH Chanika ino ayi.

Mtengo	Mtengo wolipira onse ochokera kwa GVH Chanika	Mtengo wolipira onse ochokera maderana
Mitengo yaying'onoying'ono	K100.00 pa mtengo uliwonse	K200.00
Mitengo yayikuluyikulu	K150.00 pa mtengo uliwonse	K250.00

8.4NDONDOMEKO YA CHISAMALIRO CHA ZIPATSO

- a) Phindu lochokera m'nkhalango ndi zipatso. [Zipatsozi ndi zofunikira kwambiri]
- b) Mitundu ya zipatso yofunika kwambiri ndi Masuku, Maye ndi mbula.
- c) Zimafunikira motani zipatso? Zimafunika kwambiri.
- d) Zipatsozi zimapezeka motani? Zimapezeka mwachikatikati.
- e) Zovuta zake ndi njira zolakwika zimene anthu amatsata akafuna kupeza zipatso m'nkhalango komanso moto wachisawawa umene umaononga mitengo yopereka zipatsozi.
- f) **Chisamaliro chabwino cha zipatso za m'nkhalango**
 - Kumatsatira ndondomeko yotentha nkhalango kumayambiriro mosamala.

- Aliyense wofuna kukathyola zipatso m'nkhalangoyi ayenera kutenga chilolezo kuchokera ku bungwe la Chanika BMC asanapite kukafuna zipatso ku nkhalango.

g) **ZIPATSO ZOLOLEDWA KUTHYOLEDWA PA CHAKA**

Anthu adzapeza zipatso kuchokera m'nkhalangoyi chaka chonse bolani ngati chilolezo cholowera ku nkhalangoyi chaperekedwa ndi bungwe la Chanika BMC.

h) **ZILOLEZO ZA OKAFUNA ZIPATSO M'NKHALANGO**

Kukatola ndi kukathyola zipatso m'nkhalangoyi ndi kwa ulele bolani ngati chilolezo chaperekedwa ndi bungwe la Chanika BMC.

i) **NDALAMA ZOLIPIRA PA ZIPATSO ZOKATENGEDWA M'NKHALANGOYI**

Zipatso ndi za ulele.

8.5NDONDOMEKO YA CHISAMALIRO CHA MITENGO YA LUZI

- a) Phindu lochokera m'nkhalango ndi luzi
- b) Mitundu ya luzi yofunika kwambiri ndi *Sanga, Mombo*, ndi *Mmphandwa*.
- c) Luzi limafunikira motani? Limafunika kwambiri.
- (d) Limapezeka motani? Limapezeka kwambiri.
- (e) Zovuta zake luzi limapezedwa m'njira zolakwika zimene anthu amatsata akafuna kupeza luzi

m'nkhalango komanso moto wachisawawa umene umaononga mitengo yaka.

(f)Chisamaliro cha mitengo ya luzi

- (a) Onse ofuna mitengo ya luzi m'nkhalangoyi ayenera kutenga chilolezo kuchokera ku Bungwe loona za chisamaliro cha nkhalango la Chanika (BMC) asanakafune luzi ku nkhalango.
- (b) Luzi lidzatengedwa pokhapokha mwadula mitengo monga ya *Sanga, Mombo*, ndi *Mmphandwa* ndi ina imene ndi mitengo yomenyako luzi osati kungopitira kukasenda luzi ayi.
- (c) Luzi liyenera kutengedwa ku nthambi zake kokha.
- (d) Madera amene mitengo ikuphukiranso ayenera adzatetezedwe ku moto.
- (e) Kudula mitengo imene imaphukira m'mwamba

d) **KUKULA KWA DERA LOSENDA LUZI M'NKHALANGO PA CHAKA**

Luzi lidzasendedwa m’dera lonse la buloko ya Chanika bolani ngati malamulo a Bungwe la Chanika loona za nkhalango la kumudzi(BMC) akutsatidwa.

e) **CHILOLEZO CHA LUZI LA KUNKHALANGO**

Aliyense ndi woyenera kupeza chilolezo kuchokera ku Bungwe la Chanika loona za nkhalango la kumudzi (BMC).

f) **NDALAMA ZOLIPIRA KUSENDA LUZI M’NKHALANGOYI**

Kukasenda luzi m’nkhalangoyi ndi kwa ulele bolani ngati chilolezo chaperekedwa ndi bungwe la Chanika BMC

8.6 NDONDOMEKO YA CHISAMALIRO CHA MANKHWALA AZITSAMBA

- a) Phindu lochokera m’nkhalango ndi mankhwala azitsamba
- b) Mitengo ya mankhwala a zitsamba yofunika kwambiri mwa ina ndi Katsitsimzukwa, Thombozi ndi masamba a mtengo wa masuku
- c) Amafunikira motani mankhwala azitsambawa? Amafunika kwambiri.
- d) Amapezeka motani mankhwala azitsambawa? Amapezeka mwachikatikati osati kwambiri.
- e) Zovuta zake za mankhwala a zitsamba ndi
 - Kusowa kwa mitengo ina ya mankhwala m’nkhalango.
 - Kupeza mitengo ya mankhwala azitsambawa m’njira yosasamala zachilengedwe kuti ikulenso. Mwachitsanzo kukungunula chikhungwa cha mtengo kukakonzera m’ng’oma wa njuchi. Izi zimaumitsa mtengo.
 - Moto wolusa woponyedwa mochedwa kutauma umene umaononga ziphukira zonsezi mankhwala a zitsamba.
- f) **Chisamaliro cha mitengo ya mankhwala a zitsamba**
 - Munthu aliyense ayenera kutenga chilolezo kuchokera ku BMC
 - Yense wotenga chilolezo kuti akakumbe mankhwala a zitsamba ayenera kukwirira dzenje lililonse limene angakumbe.
 - Madera onse amene ali ndi ziphukira za zitsamba za mankhwala ayenera kutetezedwa ku moto.
 - Anthu ayenera kulimbikitsidwa kubzala mitengo ya mankhwala a zitsamba

g) **DERA LOVOMEREZEDWA PA CHAKA KUPEZA MITENGO YA MANKHWALA A ZITSAMBA M'NKHALANGO**

Kupeza mankhwala a zitsamba mnkhalango kudzachitika mdera lonse la Buloko ya Chanika BMC bolani ngati malamulo ake akutsatidwa.

h) **CHILOLEZO CHA KUNKHALANGO**

Aliyense ndi oyenera kupeza **mankhwala a zitsamba kuchokera m'nkhalangoyi bolani ngati ali ndi chilolezo chochokera ku BMC.**

i) **NDALAMA ZOLIPIRA POFUNA MANKHWALA A ZITSAMBA A M'NKHALANGOYI**

- .Aliyense wofuna **mankhwala a zitsamba** wochokera mu dera la GVH Chanika adzalipira K500.00 pa chilolezo chimodzi.
- Wina aliyense ochokera kudera lina adzalipira K1,000 pa chilolezo chimodzi.

9.0CHIKONZERO CHA KUGAWANA KWA PHINDU LOCHOKERA MU ZINTHU ZA M'NKHALANGO.

Ndalama zonse zotolera ku zogulitsa za m'nkhalango zidzagawidwa motere:

GOME 9.1 NDALAMA ZOTOLERA KUCHOKERA MADERA OSIYANASIYANA

Kochokera ndalama zotolera	Gulu lake la Ndalama zotolera	Dzina la banki imene idatsek ulidwa	Osainira	Ntchito za ndalama	Ndemanga
Thumba la ndalama zotolera kuchokera ku nkhalango yosungidwa	Ndalama zotolera kuchokera ku zilolezo pa zinthu za ntchito za m'makomo	Akaunti ya Bungwe la Chanika (BMC) Loyang' anira za Nkhalango	Mamembala osankhidwa Bungwe la Chanika(BMC) loyang'anira za Nkhalango	<ul style="list-style-type: none"> • Kupereka ngongole zazing'onozing'ono • Kuthandizira osowa ndi ovutika monga amasiye, anamfedwa ndi okalamba • Kuyendetsa ntchito za nkhalango. • kugula zinthu zofunikira za gulu pa nthawi ya maliro 	<ul style="list-style-type: none"> • Zinthu zonse zochokera m'nkhalango zituluke pokhapokha zilolezo ziperekedwe ndi a bungwe loona za nkhalango la Chanika(BMC) • Ndalama zonse zotoleredwa ku misonkho ya zinthu zokagwira ntchito m'makomo zidzaikidwe mu thumba la ndalama la nkhalango imeneyi.
Thumba la	Ndalama	Akaunti	Mamembala	• Kupereka	• Magawo asanu ndi

ndalama zotolera kuchokera ku nkhalango yosungidwa	zotolera kuchokera ku zilolezo pa zinthu za m'nkhalango zokagulitsa	ya Bungwe la Chanika (BMC) Loyang'anira za Nkhalango komanso Wamkulu woyang'anira za nkhalango pa boma (DFO)	osankhidwa Bungwe Chanika (BMC) loyang'anira za Nkhalango komanso Wamkulu woyang'anira za nkhalango pa boma (DFO)	ngongole zazing'onozing'ono <ul style="list-style-type: none"> • Kuthandizira osowa ndi ovutika monga amasiye, anamfedwa ndi okalamba • Kuyendetsa ntchito za nkhalango. • kugula zinthu zofunikira za gulu pa nthawi ya maliro 	limodzi a ndalamazi (60%) zidzaikidwa mu akaunti ya Bungwe loona za nkhalango la Chanika(BMC) <ul style="list-style-type: none"> • Magawo atatu mwa magawo khumi (30%) a ndalama zotolera pa misonkho ya zochokera m'nkhalango zidzaikidwa mu akaunti ya chitukuko cha nkhalango (FDF) • Gawo limodzi la magawo khumi la ndalamazo (10%) lidzaikidwa ku akaunti ya akuluakulu a m'mudzi oyendetsa za nkhalango (LFMBA)
--	---	--	---	--	--

10.0MFUNDO ZOKHUDZA NDALAMA

Bungwe la Loyang'anira za Nkhalango (BMC) likuyembekezeka kudzapereka zilolezo zosiyanasiyana pa phindu la zinthu zochokera m'nkhalango pa mitengo yosiyanasiyana molingana ndi m'mene ilili ntchito yake kukagulitsa zinthu kapena kukagwiritsa ntchito pakhomo. Mitengo ya Zilolezo potolera ndalama za m'nkhalango pa zinthu zokagulitsa ndi zokagwiritsa ntchito pakhomo idabwera poganizira

mfundo zimene zidaperekedwa pa nthawi ya kulumikizana kumene kunalipo ndi a Bungwe Loyang'anira za Nkhalango la kumudzi (BMC) ndipo Kenaka idakonzedwa limodzi pomva maganizo a eni dera.

Padali zambiri zimene zidagwiritsidwa ntchito. Mitengo ya zilolezozi idakhazikitsidwa Poonaa m'mene mitengo ya kudera lakumudzi ilili komanso Poonaa mulingo wa m'mene chuma cha m'derali chilili pa katundu wochokera m'nkhalango wokagulitsidwa kapena kukagwiritsa ntchito pakhomo ndipo yawonetsedwa ku gawo lachinayi ku ndime ya zofotokozerakumapeto kwenikweni mu Gome 4.

Ndalama zolowa pa chaka zayerekezedwa pa MK1,870,500.00 imene ndi 49.26% ndipo ndalama zina MK1,927,000 zimene ndi 50.74% ndi zochokera ku zilolezo za pakatundu wokagulitsa wochokera m'nkhalango. Kotero kuphatikiza ndalama zonse pamodzi ndi MK3,797,500.

Pofuna kuonetsetsa kuti ntchito yotolera ndalama ikupitirira mpaka mtsogolo ntchito zambiri zakonzedwa kuti zidzagwiridwe ndi eni dera lachitukukoli pamodzi ndi a Bungwe a BMC loyang'anira za nkhalango. Amenewa adzagwira ntchitozi mosakakamizidwa koma modzipeleka okha. Ndalama zake zokagwirira ntchitozi zakonzedwa moyang'ana bwinobwino m'mene ndalama zolowa za zilolezo zilili.

CHIDZIWITSO

Malipiro a ntchitozi sadzaperekedwa ndalama zenizeni (Kashi) mosinthana ndi ntchito imene yagwiridwa ayi.

10.1GAWO LOYAMBA LA ZOFOTOKOZERA LOLEMBEDWAM'MAGOME

Gome loyamba likuonetsa ndalama zofunika kulipira pantchito zogwiridwa chaka ndi chaka(kalilpiridwe ka ntchito za kayendetsedwe ka nkhalango)

NTCHITO	Kuchuluka kwa ochita msonkhano	Kodi ndi kangati pa tsiku?	Ndalama zake pa tsiku (MK)	NDALAMA ZONSE (MK)
Kutentha moyambirira kuteteza nkhalango kuti isapsye ndi moto wolusa	10	7	500	35,000
Kuyendera Nkhalango	15	52	500	390,000
Kuchititsa misonkhano	12	24	500	144,000
Kuchita kafukufuku wa malonda m'misika	12	1	2,000	24,000
Kupanga mosungira uchi	20	1	200	12,000
Kupachika mmitengo zowetera Uchi	20	3	200	12,000
Kukolola	65	3	2000	390,000
Kupereka zilolezo	3	365	200	216,000
ZONSE PAMODZI				690,400

10.2 KULOWA NDI KUTULUKA KWA NDALAMA CHAKA NDI CHAKA

Potengera zina m'magawo ena amene afotokozedwa kale, ndalama zolowa ndi zotuluka chaka chilichonse m'dera la Chanika zawonetsedwa bwinobwino mu gome 2 m'munsimu. Izi zionetsa kuti pansu pa chitsanzo chabwino cha kayendetsedwe ka nkhalango kogwirizana pakati pa ogwira ntchito zoonankhalango ndi anthu kumudzi umodzi umatsimikizira kuti magawo onse a ndalama zotolera ku zilolezo (imene ndi 100%) zidzapita ku thumba la ndalama la BMC pamene magawo makumi asanu ndi limodzi (60%) a ndalama zotolera pa zilolezo zoperekedwa pa zinthu zokagulitsa zidasungidwanso mu buku la ku banki la BMC lomwelo. Magawo makumi atatu (30%) a ndalama zotolera pa zilolezo pa katundu wokagulitsa zidzaikidwa mu buku la chitukuko cha nkhalango losungidwa ku likulu loona zankhalango monga m'mene zifunikira. Magawo khumi pa magawo zana lililonse (10%) mwa ndalama zotolera pa zilolezo za zinthu zokagulitsa zidzaperekedwa ku thumba la ndalama la oyendetsa ntchito za bungwe loyang'anira za nkhalango la m'mudzi (la LFMB) losungidwa ndi eni dera ku boma kumene owona za nkhalango akukhala.

10.2.1 GOME 2: CHIYEREKEZO CHA KULOWA NDI KUTULUKA KWA NDALAMA MU BULOKO YA NYANGA

Ntchito za Nyanga BMC	NDALAMA ZAKE (KM)	CHIWEREGERO CHA NDALAMA ZONSE PA ZANA LILILONSE(%)
Kupereka Zilolezo pa zinthu zokagwiritsa ntchito pakhomo zochokera m'nkhalango	1,870,500	49.26%
Kupereka zilolezo pa zinthu zokagulitsa zochokera m'nkhalango	1,927,000	50.74%
Ndalama zonse zolowa	3,797,500	100%

Kuchotsera gawo la ndalama za kayendetsedwe ka ntchito zankhalango za oyang'anira bungwe lankhalango (10% ya LFMB)	379,750	
Zotsala	3,417,750	
Kuchotsera gawo la ndalama za kayendetsedwe ka ntchito zankhalango za bungwe la nkhalango (monga ntchito yogwiridwa, zogulidwa)	690,400	
Ndalama zokhalako pa zolowa zonse zimene zikhoza kugwira ntchito	2,727,350	
Chiyerekezo cha ndalama zolowa pa dera lokwanira ekala imodzi (ha)	151,519.44	
Chiyerekezo cha ndalama zolowa pa banja lililonse	41,959.23	
Chiwerengero cha ndalama za Oyang'anira Bungwe lakumudzi loyendetsa za nkhalango (LFMB A/C)		
Ndalama zolowa kuchokera ku mgwirizano wa kayendetsedwe ka Buloko ya Chanika	379,750	

Thumba la Bungwe lakumudzi loyang'anira za nkhalango (LFMB A/C)		
Ndalama zolowa kuchokera ku mgwirizano wa kayendetsedwe ka Buloko ya Chanika	379,750	

10.2.3GOME 3: Kuonetsa chiwerengero cha phindu la zinthu zochoka m'timadera tating'onoting'ono tam 'nkhalango cha pa chaka

SNo.	Zinthu zochokera m'nkhalango	Chiwerengero cha zolembedwa zonse mu timinda toyerekezera	Chiwerengero cha kupezeka kwake kwa zochokera m'nkhalango pa maekala awiri ndi theka[Ha]	Chiwerengero cha Phindu lochokera m'timadera tating'onoting'ono tam 'nkhalango pa chaka
1.	Mitengo yaying'ono	8	200	360
2.	Mitengo yayikulu	5	125	2250
3.	Nkhuni	18	150	2700
4.	Matabwa	6	450	8100
5.	Mankhwala	Mipukutu 23	580	10,448
6.	Zipatso	Mabigiri 16	393	7067
7.	Bowa	Mabigiri 17	435	7650

8.	Luzi	Mipukutu 15	374	6741
----	------	-------------	-----	------

10.2.4GOME :4 Kuonetsa chiyerekezo chakutsogolo pa ndalama zolowa kuchokera ku ndalama za zilolezo chaka ndi chaka

SNo.	Zinthu zochokera m'nkhalan go	Chiwerengero cha ndalama zotolera kuchokera ku zilolezo pa katundu wokagwiritsa ntchito m'makomo kuchokera m'nkhalango	Chiwerengero cha ndalama zotolera kuchokera ku zilolezo pa katundu wokagulitsa wochokera m'nkhalango	Chiwerengero cha Phindu lochokera m'timadera tating'onoting'ono tam 'nkhalango chaka ndi chaka (MK)
1.	Mitengo yaying'ono	540,000	150,500	690,000
2.	Mitengo yayikulu	682,500	-	682,500
3.	Nkhuni	624,000	465,000	1,089,000
4.	Matabwa	130,000	210,000	340,000
5.	Mankhwal a	240,800	608,800	848,800
6.	Zipatso	72,500	145,000	217,500
7.	Bowa	65,000	63,000	128,000
8.	Luzi	13,000	100,000	113,000

11.0ZOFOTOKOZERA ZONSE ZIMENE ZALEMBEDWA

- a. Zofotokozera mutu woyamba- Malamulo
- b. Zofotokozera mutu Wachiwiri- Mgwirizano

11.1MUTU WOYAMBA: MALAMULO A MGWIRIZANO WOSAMALIRA LIMODZI BULOKO YA CHANIKA

Zolinga za Malamulo

- a. Kuteteza, kuyendetsa ndi kugwiritsa ntchito mosamala phindu lochokera m'nkhalango yopezeka mu Buloko ya Chanika m'dera la GVH Chanika m'malo mwa onse kuti pakhale kusabilana pa kagwiridwe ka ntchito ndi zonse zokhudza ndalama.
- b. Kukhazikitsa bungwe ndi kuyendetsa ntchito zonse zokhudza mamembala Buloko ya Chanika.

BUNGWE LOYENDETSA ZANKHALANGO

Bungweli idzakhala ndi Mamembala khumi ndi awiri (12) amene maudindo awo ndi awa: Wapampando ndi wachiwiri wake, Mlembe ndi wachiwiri wake, Msungichuma, Mamembala wamba asanu.

Theka la anthuwa adzakhala akazi (50%) ndipo Padzakhhalanso mamembala ena asanu amene ali ndi luso lapadera pa ntchito zankhalango odzathandizira bungweli. Mamembala adzasankhidwa kuchokera ku midzi imene ili m'dera la GVH Chanika.

ENA ONSE ZIDZAKHALA MOTERE

- Padzakhala onse oonetsa chidwi pantchito zankhalango
- Onse okhala m'midzi pansu pa ulamuliro wa GVH Chanika adzaikidwamonso
- Mafumu, ma Gulupu amidzi (GVH) ndi Mwinimtunda (Chalo) ndi amene adzapeleka upangiri ku komiti imeneyi zikafunikira kutero

11.2NTCHITO ZA BUNGWE LOYENDE TSA ZANKHALANGO/AUDINDO

Ntchito ndi udindo wa komiti ya chisamaliro cha nkhalango

- Kuonetsetsa kuti phindu la ndalama likugwiritsidwa ntchito bwino
- Kuonetsetsa kuti malamulo a gululi akutsatidwa
- Kupereka malipoti achitukuko ndi zonse zimene zakwaniritsidwa ku anthu onse a m'dera
- Kupereka malipoti achitukuko ndi zonse zimene zakwaniritsidwa kwa Gulupu, Chalo ndi Ogwira ntchito zankhalango
- Kulanda zonse zimene zatengedwa ku nkhalangoyi opanda chilolezo

11.3NTCHITO ZA MAMEMBALA OSANKHIDWA

Wapampando ndi wachiwiri wake

Ntchito zawo

- Kuchititsa misonkhano
- Kukonza mitu ya zofunika kukakambirana ku msonkhano
- Kukonza ndondomeko ya ntchito zokachitika zokhudzana ndi ku nkhalango
- Kuonetsetsa kuti malamulo kutsatidwa
- Kukhala m'modzi wa osainira pakakhala zinthu zofunika kutapa ndalama ku banki
- Kudziwitsa okhudzidwa ena onse za m'mene ntchito ikuyendera
- Kusiyira Mamembala ena kuti akagwire ntchito m'malo mwawo akatanganidwa

Zowayenereza

- Akhale wodziwa kulemba ndi kuwerenga
- Akhale wachidwi ndi ntchito zankhalango
- Akhale wochokera mwa a GVH Chanika
- Akhale osamangidwapo

MLEMBI NDI WACHIWIRI WAKE

Ntchito zawo

- Kulemba zokambirana pa nthawi ya misonkhano uliwonse (maminitsi)
- Kulemba makalata oitana anthu pakafunika misonkhano
- Kuwerenga maminitsi a mfundo zonse za msonkhano umene udachitika m'mbuyo mwa msonkhano umene ukufuna kuchitikawo
- Kukhala m'modzi wa osainira pakakhala zinthu zofunika kutapa ndalama ku banki
- Kulondoloza ndi kulinganiza zimene Msungu chuma akulemba
- Kulemba ndi kusunga zolembedwa za katundu yense wa gululi

Zowayenereza

- Akhale wodziwa kulemba ndi kuwerenga
- Akhale osamangidwapo
- Akhale wachidwi ndi ntchito zankhalango
- Akhale wochokera mwa a GVH Chanika

MSUNGICHUMA

Ntchito zake

- Kusunga ndalama ndi katundu wa gulu la Mamembala a Buloko ya Chanika
- kusunga zolembedwa zonse zokhudza ndalama ndi katundu
- Kukhala m'modzi wa osainira pakakhala zinthu zofunika kutapa ndalama ku banki
- Kupereka malipoti a za chuma zonse kwa anthu onse m'derali

Zomuyenereza

- Akhale wosamangidwapo
- Akhale wodziwa masamu (kuwerengera zinthu)

- Akhale munthu wodalirika

MAMEMBALA A BUNGWE

Ntchito zawo

- Kuthetsa mikangano yobuka pakati pawo
- Kuthandiza kukonza mitu ya zofunika kukakambirana ku msonkhano
- Kuimirira Gulu lawo kukafunikira kutero

Zowayenereza

- Akhale wachidwi ndi ntchito zankhalango
- Akhale wonena mfundo zothandiza ndi zoona
- Akhale wochokera kwa GVH Chanika

Ntchito ndi udindo wa anthu ena onse m’dera la Buloko ya Chanika

- Kutenga gawo pa chisamaliro cha nkhalango m’dera la Chanika
- Kutenga gawo pamene masankho akuchitika
- Ali ndi udindo wowonetsetsa kuti ali ndi ufulu wopeza phindu losiyanasiyana
- Ufulu wofunsa kuti amvetsetse pamene sanamve bwino
- Ali ndi ufulu wothetsa komiti yoona za chisamaliro cha nkhalango kukafunikira kutero
- Ali ndi udindo kukhalapo nthawi ya misonkhano ya ntchito zawo nthawi zonse

Zowayenereza pa udindo

- Ayenera kuti achokere kwa GVH Chanika
- Akhale ndi chidwi ndi ntchito zankhalango

Nthawi yokhala pa udindo

- Zisankho zidzachitika zaka zitatu zilizonse

- Munthu adzasankhidwa ndi kukhala Membala motsogozana kawiri kokha.
- Akachita bwino atha kupitirira

11.4KUCHOTSEDWA KWA A PAUDINDO (MAMEMBALA)

- Ngati satsatira malamulo okhazikitsidwa
- Ngati Membala alephera kugwira ntchito zake mu bungweli

Mphamvu zopatsidwa kwa komiti

- Kuthetsa mikangano yobuka pakati pawo
- Kulanda zonse zimene zatengedwa ku nkhalangoyi opanda chilolezo
- Kulanda zida zimene zagwiritsidwa ntchito kapena zimene zikukagwira kumene ntchito yotengera phindu losiyanasiyana m'nkhalangoyi mopanda chilolezo

KUTHETSA BUNGWE

- Bungweli lidzathetsedwa pakapita zaka zitatu
- Bungweli lidzathetsedwa ngati laononga ndalama za gululi.

UMEMBALA

- Woyenerera kukhala Membala ndi wina aliyense wochokera mwa GVH Chanika

ZISANKHO

- Zisankho zidzayenera kuchitika mwa mtendere ndi mopanda chinyengo molumikizana ndi Chalo (Mwinimtunda)
- Aliyense wochokera m'dera la GVH Chanika amene akukwanitsa zomuyenereza pa udindo ali ndi ufulu wopikisana nawo pampandowo
- Lamulo limene limalamula aliyense kuvota kamodzi kokha ndi limene lidzagwiritsidwa ntchito pa nthawi yotereyi.

Zisankho zidzachitika motani?

- Kwenikweni zidzachitika pakapita zaka zitatu
- Aliyense wofuna kudzakhala Membala mtsogolomo adzalipira K100.00

Zifukwa zosakhalira Membala wa gululi

- Ngati munthu aphwanya malamulo
- Akasamuka kuchoka m’dera la GVH Chanika

UFULU WOKADANDAULA KWINA

- Membala aliyense ali ndi ufulu wokamang’ala kwa a GVH Kenaka kwa Chalo ngati sadakhutitsidwe ndi chigamulo cha Chanika BMC

KAYENDETSSEDWE KA GULULI

NTCHITO ZA ALIYENSE WA GULULI

- Kukhalapo misonkhano ikamachitika
- Kutenga gawo pa nkhani za nkhalango
- Kukonza ndondomeko za ntchito zankhalango ndi anthu ena onse

Nthawi yokumanirana kuchita misonkhano

- Chanika BMC idzayenera kukumana kamodzi pa mwezi
- chanika BMC idzayenera kuchititsa msonkhano ndi anthu a m’derali kamodzi pa mwezi

malamulo ndi zilango zake

LAMULO	CHILANGO
Munthu asatenthe buloko opanda lamulo	20,000
Aliyense atengepo mbali posamalira buloko	2000
Osadula mitengo opanda chilolezo	1000
Osamanga nyumba mu buloko	20,000
Osalima mu buloko	20,000
Osatola nkhu ni mu buloko opanda chilolezo	1000 pa mtolo
Otsatchera msampha mu buloko	15,000

KUCHULUKA KWA OYENEREZEDWA KUYAMBA MSONKHANO ATAFIKA PA MALO OSONKHANA

- Ayenera kukwanira theka la mamembala a bungwe loyendetsa ntchito za gululi.
- Oimirira mudzi uliwonse apabungwe lalikulu ayenera kukhalapo pamene BMC ikukumana ndi anthu (Nkofunika kuti nawonso anthu ayenera kukwanira theka la chiwerengero cha anthu onse m'derali kapena kupitirira pamenepa kuti payambike msonkhano).

KAYENDETSEDWE KA NDALAMA

- A bungwe la BMC ayenera kutsekula buku la ku banki
- Msungichuma azidzalandira ndalama ndi kupereka malisiti ake, azidzalemba zonse zokhudza ndalama zolowa ndi zotuluka pa ntchito zonse za Buloko ya Nyanga m'mabuku ake mwa ndondomeko yake.
- Ndalama zonse zolipira zidzayenera kuvomerezedwa zisanatulutsidwe poonetsetsa kuti makalata ake onse olipirira akusainiridwa ndi kuvomerezedwa.
- Ndalama zonse zotolera zidzagwira ntchito izi
 - Kubwereketsa kwa ofuna ngongole zazing'onozing'ono (30%)
 - Kuthandiza osowa, amasiye, okalamba ndi opezeka ndi HIV ndi AIDS (30%)
 - Kuyendetsa ntchito za Buloko ya Chanika (30%)
 - Kuthandizira ku VDC (10%)

DZIWANI IZI: Chiongola dzanja pa ngongole zazing'onozing'ono ndi (20%)

11.5MFUNDO ZOFUNIKA KUTSATA PAKATI PA AKAZI NDI AMUNA PAKUSASIYANA KWAO PAMAUDINDO AWO

- Osatengera kuti ndi wamkazi kapena wamwamuna aliyense adzayenera kutengapo gawo pa ntchito zosiyanasiyana kupatula okhawo amene ndi olumala, odwala, ndi okalamba.

- Phindu lochokera mu Buloko ya Chanika komanso zonse zofunika kusungherana poyendetsa ntchito za m'nkhalango zidzayenera kugawidwa mofanana pakati pa mamembala onse.

11.6NDONDOMEKO YA NTCHITO YOSUNGA ZOLEMBEDWA ZONSE ZOKHUDZA NDALAMA ZOLOWA NDI ZOTULUKA

Bungwe loyendetsa za nkhalango la BMC lidzayenera kukhala ndi mabuku awa

- a) Buku lolebamo mfundo za msonkhano uliwonse (Miniti buku)
- b) Buku la Zolowa
- c) Buku la Zilolezo
- d) Buku la maulendo oyendera nkhalango
- e) Buku lolebamo m'ndandanda wa zofunika zina za gulu monga katundu ndi maina a anthu (Register)
- f) Buku la milandu ndi zilango

12.0KUUNIKIDWANSO KWA MALAMULO A BUNGWELIKuunikanso malamulo kudzachitika zaka ziwiri zili zonse kudzera m'njira ziwiri. Yoyamba ndi pamene anthu akhoza kuchita kupempha kwa a bungwe ndipo yachiwiri ndi pamene a bungwe akhoza kuchita kupempha kwa anthu onse kuti pakhale kusintha koteroko.

12.1KUGAWANA PHINDU LA M'NKHALANGO

Phindu limene lilipo likuphatikizapo ndalama ndi zina zonse zochokera m'nkhalango. Izi zidzayenera kugawidwa mofanana ndipo membala aliyense ndi woyenera kulandira nawo zimenezi. Odzaongolera zonsezi ndi a Bungwe la BMC ndi kuvomerezedwa ndi anthu onse a m'derali.

12.2KUYAMBA KUGWIRA NTCHITO KWA MALAMULO ANG'ONO A BULOKOYI

Malamulo a Bungwe la Chanika pamodzi ndi malamulo ongokonzedwa kumene adzayamba kugwira ntchito onse ofunika kuvomereza akasainira.

OSAYINIRA ONSE

Wosainira

Tsiku

.....

.....

Wapampando wa Buloko ya Chanika

.....

.....

GVH (Ogulupu)

.....

.....

Mwinimtunda /Chalo (T/A)

.....

.....

Bwanamkubwa wa Boma la Ntchisi (DC)

ZOFOTOKOZERA MUTU WACHIWIRI:

13.0MGWIRIZANO PACHISAMALIRO CHA NKHALANGO PAKATI PA BOMA NDI ANTHU

13.1MGWIRIZANO WOYENDE TSA LIMODZI NTCHITO ZACHISAMALIRO CHANKHALANGO (Lamulo la zankhalango, la 1997, Gawo 25)

Pangano lino lakonzedwa tsiku la lero pa..... mwezi wa.....Pakati pa Wamkulu wowongolera Zankhalango, miyala ndi migodi M'Malawi, amene akuimirira Boma la Malawi ndi nzika zonse zokhala m'dera la mudzi/midzi iyi.....ya Mwinimtunda (T/A).....boma la kuimiridwa ndim'malo mwa Bungwe la kumudzi loona zankhalango[limene muno likutchedwa kuti (LFO) komanso lodziwika ndi Dzina la Bungwe La Chigawo Chachikulu Losamalira za Nkhalango (BMC). Pano Boma likupanga mgwirizano ndi LFO kupereka mwayi woyendetsera limodzi ntchito zankhalango molumikizana ndi Maofesi a Boma oona za nkhalango (Forestry Dept.) pa zinthu zonse zofunikira zochokera mu Buloko ya nkhalango yosungidwa yandi cholinga chopititsa patsogolo chisamaliro cha nkhalango chosalekeza komanso kulimbikitsa kupititsa patsogolo miyoyo ya anthu okhala m'madera oyandikana.

Mu Mgwirizano uno zimene tagwirizana ndi izi:

- Pakukhutitsidwa ndi dongosolo la m'mene likuyendetsera ntchito Bungwe la kumudzi loona zankhalango (LFO), Boma la Malawi lidzavomereza ndi kupereka mphamvu ku bungweli kuti liteteze, lisamalire ndi kuongolera kayendetsedwe kabwino ka nkhalango mosaonongeratu koma mosungako mathandizo ena a mawa kuchitira ubwino aliyense wa m'dera lam'mudzi wa.....
- Bungwe la kumudzi loona zankhalango lidzavomereza ndi kukhala ndi udindo woteteza, kuyendetsa, kuongolera ndi kugwiritsa ntchito bwino zinthu zochokera m'nkhalango mosaonongeratu koma mosungako

mathandizo ena a mawa monga mwa malamulo ndi mfundo zimene zokhazikitsidwa mu mgwirizano lino komanso mu ndondomeko ya chikonzero cha mgwirizano pakasamalidwe ka nkhalango imene yayikidwa pamapeto pa chikonzerochi.

UDINDO WA BUNGWE WA LAKUMUDZI LOONA ZA NKHALANGO

- Mwa paderadera Boma la Malawi likupereka mphamvu ku Bungwe la kumudzi loona zankhalango (LFO) ngati izi zitatsatidwa motere:
 - i. Ngati nkhalango idzasungidwa ndi kusamalidwa monga mwa njira zovomerezeka za chisamaliro cha nkhalango zimene zaikidwa mu ndondomeko ya chikonzero cha mgwirizano pa kasamalidwe ka nkhalango pamapeto pa chikonzerochi.
 - ii. Bungwe la kumudzi loona zankhalango lidzaonetsetsa kuti mphamvu zimene linalandira kuchokera ku Boma la Malawi mu malamulo a zankhalango a m'chaka cha 2001 ndi ena otsatira zikugwira monga mwa mgwirizano wolembetsa Bungwe la kumudzi loona zankhalango.
 - iii. Bungwe la kumudzi loona za nkhalango (LFO) lidzateteza, lidzayendetsa, lidzaongolera ndi kugwiritsa ntchito bwino mathandizo osiyanasiyana a m'nkhalango m'njira ya chisamaliro chosungako zina molingana ndi mphamvu zimene adapatsidwa. Bungweli lidzaperekanso zilolezo ndi ziphaso za zinthu zonse zochokera m'nkhalango zimene kwenikweni zimathandiza anthu m'madera awo komanso pa nthawi yokolola zambiri pamene afuna kukagulitsa monga m'mene zafotokozeredwa mu chikonzero cha chisamaliro cha nkhalango
 - iv. Pothandiza Wamkulu woona zankhalango pa boma (DFO), Bungwe la kumudzi loona zankhalango (LFO) lidzapereka makalata ochitira umboni (makalata osonyeza umwini wa chinthu), kuvomereza kumene munthu wakatenga zochokera m'nkhalango ndi umwini wa katundu amene ali kuyang'aniridwa ndi bungweli. Bungweli likhoza kuthandizanso aliyense wofuna kalata ya umboni ngati ali ndi zinthu zofuna kugulitsa zochokera ku mitengo ya m'nkhalango pakulipempha Kalata yochokera kwa Wamkulu woona zankhalango pa boma(DFO)
 - v. Mathandizo onse ochokera m'nkhalango adzagwiritsidwa ntchito mofanana ndi onse okhala m'derali molingana ndi ndondomeko zake za kugawana phindu lochokera mu nkhalango monga mwa chikonzero ndi malamulo a Bungwe la kumudzi loona za nkhalango (LFO).

- vi. Ndalama zonse zotolera kuchokeraa m'nkhalango zidzagawidwa mofanana ndi onse okhala m'derali molingana ndi ndondomeko zake za kugawana phindu lochokera mu nkhalango monga mwa chikonzero ndi malamulo a Bungwe la kumudzi loona za nkhalango (LFO).
- vii. Magawo khumi mwa magawo zana limodzi (10%) a ndalama zotolera ku zilolezo ndi ziphaso pa phindu lobwera chifukwa chogulitsa zinthu za m'nkhalango zidzaikidwa mu buku la ku banki la oyang'anira za nkhalango ya ku mudzi laLFMB (Local Forest Management Board) ndipo izi zizidzachitika miyezi itatu ili yonse.
- viii. Magawo makumi atatu mwa magawo zana limodzi (30%) a ndalama zotolera ku zilolezo ndi ziphaso pa phindu lobwera chifukwa chogulitsa zinthu za m'nkhalango zidzaikidwa mu buku la ku banki nambala wani la Thumba la Chitukuko zinthu zochokera m'nkhalango ya ku mudzi (Forest Development Fund Account) ndipo izi zizidzachitika miyezi itatu ili yonse.
- ix. Ndi choyembekezeka kuti magawo makumi asanu ndi limodzi mwa magawo zana limodzi (60%) a ndalama zotoleredwa ndi Bungwe la kumudzi loona zankhalango (LFO) zogawana zitachitika monga m'mene zafotokozedwera pamwambapa pa (g) ndi (h) 60% imeneyi idzagwiritsidwa ntchito ndi a bungweli pa chitukuko cha nkhalango, chisamaliro ndi kuyendetsera ntchito za nkhalango. Padzakhala kugwiritsa ntchito ndalamazi mkati ndi kunja komwe kwa dera la mgwirizano woyendetsera Buloko ya Mpanang'ombe.
- x. Bungwe la kumudzi loona zankhalango (LFO) lidzaonetsetsa kuti zolembedwa zonse za ndalama ndi zilolezo zonse zimene zaperekedwa zikupezeka mosavuta akadziwitsidwa kuti akuzifuna Wamkulu wa zankhalango m'Malawi ku unduna woona za nkhalango (**Director of Forestry**) wachiwiri wake kapena Bwanamkubwa (DC) atauzidwa ndi Wamkulu wa zankhalango m'Malawi kapena Bwanamkubwa (DC).
- xi. Bungwe la kumudzi loona zankhalango (LFO) lidzaimirira anthu onse a m'dera lake ndi kukhala ndi udingo woyankha china chilichonse chimene anthuwo angafunse pa ntchito yake m'deramo ndipo bungweli lidzayendetsanso ntchito zakezo monga mwa malamulo okhazikitsidwa a zankhalango amene adavomerezedwa.

UDINDO WA DIPATIMENTI YOONA ZA NKHALANGO

- Mwapaderadera wamkulu woona zankhalango pa boma (DFO) ndi onse omuimirira pantchito yake adzayenera
 - a) Kupereka maluso a ntchito yawo ndi kulimbikitsa ntchito yokwaniritsira zolinga zosamalira nkhalango limodzi ndi Bungwe la kumudzi loona zankhalango (LFO) ndi kuunikanso mu nthawi yabwino ndondomeko ya chikonzero cha mgwirizano pakasamalidwe ka nkhalango yoikidwa kumapeto kwa zonsezi.
 - b) Kulangiza ndi kuthandiza m'njira zosiyanasiyana pochita kalondolondo pa kayendetsedwe ka ndalama za nkhalango kuphatikizapo kuchititsa misonkhano, zisankho zazikulu ndi zazing'onozing'ono, kusunga zolembedwa zonse za pamisonkhano, kulongosola kayendetsedwe ndi chisamaliro cha katundu ndi ndalama za Buloko ya Mpanang'ombe komanso kulemba malipoti.
 - c) Kupereka zinthu zosiyanasiyana zofunikira kuyendetsera ofesi ya Bungwe la kumudzi loona zankhalango(LFO) {utangovomerezedwa mgwirizano unowu pa kusainira} monga mabuku a ndalama zolowa ndi kutuluka m'thumba la ndalama (**cash books**), mabuku olembamo zonse zogwirizana pa misonkhano (**Minute books**), makalata a zilolezo amene amakhala awiriawiri, mapapala olembapo Kalata za ofesi amene amakhala oikiratu keyala (adiresi), chidindo cha ofesi ya Bungwe la kumudzi loona zankhalango (LFO) kapena chizindikiro china chapaderadera cha ofesiyi ndi zinthu zina zofunikira ndi cholinga cholimbikitsa kuchita zinthu mosabisa ndi kulemba zonse za chisamaliro ndi kayendetsedwe koyenera ka zinthu za nkhalango komanso kukhazikitsa dongosolo labwino la kaperekedwe ka ziphaso pa katundu wochokera m'nkhalango. Zikuyembekezeka kuti bungweli lidzachita ntchito yokagula katundu ameneyu pokhapokha kutolera ndalama kutachitika.
 - d) Kuthandiza kulumikizana pantchito zolimbikitsa malamulo a zankhalango kumene kumakhalapo pakati pa Bungwe la kumudzi loona zankhalango (LFO), mafumu, anthu eni dera, magulu olimbikitsa bata poyendera m'dera, ogwira ntchito m'boma a zachitetezo ku madera, wamkulu woweruza milandu pa boma motsata ndondomeko ya chikonzero cha mgwirizano pakasamalidwe ka nkhalango imene yaikidwa kumapeto kwa zonsezi.
 - e) Kuyendera limodzi ndi Bungwe la kumudzi loona zankhalango (LFO) malire a Buloko amene adalembedwa mu ndondomeko ya chikonzero cha mgwirizano wosamalira zachilengedwe

m'nkhalango kuti chisamaliro chikhale monga m'mene zilili mu mgwirizano uno komanso monga m'mene zilili poona mlingo ndi mfundo za ndondomeko yakutengako gawo pa ntchito zankhalango muno m'Malawi.

- f) Kugwira ntchito limodzi pomasainira zilolezo ndi ziphaso za katundu wochokera m'nkhalango kusonyeza kuvomereza ntchito imene yachitika ya katundu wokagulitsidwa kapena kukagwiritsira ntchito ya m'makomo ngati munthuyo waguladi potsatira ndondomeko ya m'chikonzero chimene chilipo cha mgwirizano pakasamalidwe ka zachilengedwe za m'nkhalango.
- g) Kupereka makalata ochitira umboni polinganiza ndi makalata otsimikizira pa katundu amene adatulutsidwa kuchokera m'nkhalango motsatira ndondomeko yokhazikitsidwa popereka ziphaso kuti pakhale kutulutsa katundu wochokera m'nkhalango movomerezeka.
- h) Kupereka matandizo osiyanasiyana ku Bungwe la kumudzi loona za nkhalango (LFO) mogwirizana ndi Ogwira ntchito za chisamaliro cha zachilengedwe, malangizo okhudza za milandu pa katundu wochokera m'nkhalango, kuthandiza pa kayendetsedwe ka bungwe ndi kagulitsidwe ka zinthu zachilengedwe za m'nkhalango monga m'mene kufunikira.
- i) Kupangitsa misonkhano yophunzitsa anthu kwa masiku angapo kuti adziwe ndi kupititsa patsogolo maluso osiyanasiyana pa kayendetsedwe ka bungwe, maluso a zamanja, ndi kuthekera kwawo pa kayendetsedwe ka bungwe loyang'anira bungwe loyendetsa za nkhalango ya kumudzi (LFO), kupititsa patsogolo kuthekera kwawo ma Chalo (T/A) ndi Mamembala ena a m'derali.
- j) Kuvomereza ndi kulimbikitsa kuti pakhale chitetezo ndi njira zobweretsera bata ndi mtendere zimene mabungwe a FMB ndi LFO amatsata pamodzi ndi ena onse m'derali motsatira Lamulo la zankhalango la 1997, komanso m'ndandanda wa malamulo ang'onoang'ono ena a 2001 ndi mgwirizano wolembetsera bungwe la zankhalango ya kumudzi (LFO Registration Agreement)

13.2CHIYAMBI, KUTALIKA KWA NTHAWI YAKE NDI KUTHA KWAKE KWA MGWIRIZANO

- Mgwirizano uno udzayamba kugwira ntchito ukadzangovomerezedwa (ukadzangosainidwa) ndi wamkulu woona zankhalango M'Malawi (Director of Forestry), Oimirira magawo osiyanasiyana a zankhalango, ndipo udzakhala ukugwira ntchito mpaka muyaya monga m'mene mfundo 6 ndi 9 zikunenera m'munsimu.
- Wamkulu woona zankhalango m'Malawi (DOF) adzakhala nazo mphamvu zothetsera mgwirizano uno ndi kuchotsa onse a m'maudindo awo ndi cholinga choteteza, kuyendetsa, kuongolera ndi kugwiritsa ntchito bwino zinthu zonse zochokera m'nkhalango pokhapokha patachitika izi :

- i. Ngati pali kutayirira kapena kulephera kuteteza, kuyendetsa, kuongolera ndi kugwiritsa ntchito bwino Buloko ya Chanika.
 - ii. Ngati bungwe loyendetsa za nkhalango ya kumudzi (LFO) lopezeka litaphwanya kwakukulu mgwirizano uno.
- Mphamvu zimene zaperekedwa pa mfundo 6 pamwambapa sizoyenera kuzigwiritsa ntchito **pokhapokha** Wamkulu woona zankhalango m'Malawi (DOF) **atayesetsakwathunthu ndi kukanika** njira **zonse** zimene akhoza kufufuza kuti athetsere mwa mtendere zovuta zimene zinalipo pa nthawiyo.
 - Pa kuchenjeza anthu a m'derali, Wamkulu woona zankhalango M'Malawi (DOF) adzayenera kunena zofooka ndi kupereka njira ndi kutalika kwa nthawi zokonzera zofookazo.
 - Bungwe loyendetsa za nkhalango ya kumudzi (LFO) likhoza kuthetsa mgwirizano uno nthawi ina ili yonse popereka chidziwitso chosachepera masabata asanu ndi atatu (8 wks) pokhapokha patachitika izi:
 - i. Pokhapokha ngati pali kuphwanya Kwakukulu kwa mgwirizano uno
 - ii. Ngati anthu a m'derali ataona kuti alephera pa zifukwa zawo kapena ataona kuti sakufuna kupitiriza ntchito zokhazikitsidwa za chisamaliro cha nkhalango chochitira limodzi ndi Boma mu Buloko ya Chanika.
 - Pamene chidziwitso chothetsera mgwirizano chaperekedwa, Bungwe loyendetsa za nkhalango ya kumudzi (LFO) lidzakhala ndi udindo wowonetsetsa kuti dera la nkhalango ndi lotetezedwa mpaka pamene bungwe losamalira nkhalango kapena Boma litatenganso udindo wake pa Buloko imeneyi.
 - Zigawo za madera okhazikitsidwa a nkhalango zidzaonetsedwa monga m'mene zilili pa mapu ongolemba pamanja amene amapanga nawo gawo la Chikonzero cha kasamalidwe ka zankhalango zimene zafotokozedwa mu mgwirizano uno wa chisamaliro cha nkhalango woyendetsera limodzi ndi Boma

**13.3NTCHITO YOLEMBA NDI KUIKA MALIRE
MIKANGANO**

- Pamene mkangano wa zankhalango ubuka mgwirizano uno ulipo, nkhani yotere idzaprekedwa kwa anduna a za nkhalango amene ali woyenera kuweruza ndi kuthana ndi zoterezi. Koma ngati wina sakhutitsidwa ndi chigamulo cha andunawa, ali ndi ufulu wokamang’ala ku bwalo lina lalikulu (la High Court).
- Ovomereza

..... Tsiku.....
Wamkulu wa Zankhalango (DOF)

..... Tsiku.....
Wapampando wa Bungwe la kumudzi la zankhalango (LFO)

..... Tsiku.....
...

OCHITIRA UMBONI (MBONI ZAKE)

..... Tsiku.....
A mfumu a m’udzi (Nyakwawa VH)

..... Tsiku.....
...

Mwinimtunda/Gogo/Chalo (T/A)
..... Tsiku.....

Bwanamkubwa wa Boma lonse (DC)
.....

POTHERA!