

**NDONDOMEKO YOSAMALIRA BULOKO YA CHIFWEREKETE
GULUPU CHIFWEREKETE
MFUMU YAYIKULU NTHONDO**

NTCHISI DISTRICT ASSEMBLY



**YOKOZEDWA NDI ANTHU AKWA CHIFWEREKETE
MOTHANDIZANA NDI ALANGIZI AZA NKHALANGO**

NDI THANDIZO LOCHOKERA KU IFMSLP



MUNTHU WOLUMIKIZANA NAYE (CONTACT PERSON)

**LEMEKEZANI KAZONGA
MAWERE II VILLAGE
G.V.H. CHIFWEREKETE
T/A NTHONDO
NTCHISI**

NAMBALA YA FONI: 09241874

MAY, 2008

ZAMKATI**Tsamba**

Kufotokoza za mmene Buloko ya Chifwelekete ilili	1
Udindo wosamalila Nkhalango	1
Malile ya buloko	1
Umwini wa nkhalango	1
Anthu ogwilitsa ntchito	1
Ntchito za Nkhalango	2
Mapo ya Nkhalango ya ntchisi kuonetsa Buloko ya Chifwerekete	3
Zigawo za kasamalidwe ka Nkhalangoyi	4
Mapu ya Buloko ndi zigawo zake	4
Cholinga chachikulu cha ndondomekoyi	5
Zolinga zing'ono zing'ono	5
Malamulo ya kagwilitsidwe ntchito	5-6
Dongosolo la kagwilitsidwe ntchito	6-7
Chigawo chachitatu (FMU 3)	8
Chigawo chachiwili (FMU 2)	8
Chigawo chachiwili	9
Chotengedwa ku nkhalango Mankhwala (FMU 3)	10
Chotengedwa ku nkhalango zipatso (FMU3)	11
Chotegedwa ku nkhalango Luzi (FMU 3)	12-13
Ndondomeko ya kagwilidwe ka ntchito	13-15
Ndondomeko yoyendela nkhalango	15-17
Dongosolo lochitila kalondolondo	17-18
Dongosolo la zachuma	18-19
Malamulo oyendetsela buloko ya chifwelekete	19-26

KUTHOKOZA

Tiri okondwa pofuna kuthokoza anthu osiyanasiyana amene apangisa kuti ndomeko yosamalira Buloko ya Chifwerekete ipangidwe motere: Agulupu a Chifwerekete, T/A Nthondo, Agulupu Anyanja, Agulupu Anguluwe pamodzi ndi mafumu ndi anthu onse. Chithokoza chipitenso kwa bambo S.C. Goneta, G.K. Chinaya, Y. Mndefu chifukwa cha upangiri wao ndiponso bambo P. Muhosha ndi bambo F.J.L. Maluwaya chifukwa cha mathandizo onsiyanasiyana.

Tikuthokozanso aku Regional Forestry Office (PCU) monga Bambo Ketulo, Mai Gama, Bambo C. Buss chifukwa cholulumikiza ntchito yonse komanso sitikuyiwala kuthokoza EU (IFMSLP) chifukwa cha thandizo la ndalama zogwirira ntchitoyi.

MAU OYAMBA

Ndondomekoyi yapangidwa pochita kafukufuku wa mnkhalango komanso kukambilana pakati pa anthu ozogulira a gulupu a Chifwerekwete, alangizi a zankhalango, mafumu, ma Gulupu ndi Gogo Chalo Nthondo.

Cholinga cha ndondomekoyi ndichofuna kuwapatsa mphamvu anthu amwa Gulupu chifwerekete kuti athe kusamalira kuno Buloko ya chifwerekete pamodzi ndi unduna wa zankhalango ndi kugwiritsa bwino antchito zinthu zopezeka mnenemo motsatira malimulo azankhalango amchaka cha 1996.

Anthu onse wogwiritsa ntchito zinthu zankhalango mdelali ayivomereza ndondomekoyi. Zimene zayikidwa ndondomekoyi ndi monga: Kasamalidwe ndi kagwiritsidwe ntchito kazinthu zopezeka mu Buloko koma mitengo yazinthu yopezeka menemo kagawanidwe kaphindu komanso kagwiritsidwe ntchito ka ndalama zopezeka pogulitsa zinthu zopezeka mu Buloko.

UDINDO WOSAMALIRA NKHALANGO

Ndondomekoyi idzalongosoledwa ndi bungwe la za nkhalango la Chifwerekete Buloko pamodzi ndi alangizi aza nkhalango. Bungweli ndilodziwika bwino, lili mwa a Gulupu a Chifwerekete, gogo chalo Nthondo ndipo lili mukawundula ku ofesi ya za nkhalango ya Ntchisi.

KUFOTOKOZA ZA MMENE BULOKO YA CHIFWEREKETE ILILI

Bulokoyi ili mkati mwa nkhalango ya boma ya Ntchisi ndipo ili kufupi ndi midzi yozungulira Gulupu Chifwerekete monga Mtuluka, Kafulu, MawereII, Chifwerekete I ndi II.

Bulokoyi yayandikana ndi buloko ya Nyanja cha ku mpoto ndi buloko ya Mnguluwe cha ku mwera. Kuchokera ku Ntchisi boma pali ntunda wokwana 13km kupita cha kumvuma.

Mnkhalangoyi muli mitsinje imene ili ndi madzi wosaphwa monga: Dwazi, Kampongozi, Chasolo, Nachiwaliza ndipo anthu ozungulila timapindula nayo mitsinjeji popatutsa ndi kuchita ulimi wothilila.

Dothi lopezeka mu bulokoyi ndi la chifulankhululu lophatikizana ndi mchenga.

Nkhalangoyi ndi ya mtundu wa sanga kutanthauza kuti mitengo imene ikupezeka mkatimo yambili ndiya sanga. Mitengo yina imene ikupezeka ndiya msenga, msuku, kadale, katope, mbawa, nkulasinga, ntukumphako, ntanthamphete, Mbwabwa, nkulo, kasokolowe, mbanga, chiyere, kanung'unung'u, nkuyu, msolo, mphsyiphysya, Mbura, mkalakati, Thombozi, kamphoni, mpasa, manjaatali

Nkhalangoyi ndi yayikulu pafupifupi 445.9ha ndipo ndiyovalila bwino mbali zambili kupatula malo ena ndi ena okwana pafupifupi 6ha omwe kwakhala kukugwa zakudya zotchedwa matondo. Mbali imeneyi anthu akhala akudula mitengo ndicholinga chofuna kutola tizilombo timeneti. Anthu amene akhala akutiwonongela mitengoyi ambili ndi wochoka madera ena monga kuvikula, kayoyo, chikhwakhwa, ndi madera ena akutali ngakhale ku Ntchisi Boma.

Mnkhalangomu muli mitengo ya masaizi yosiyanasiyana kuyambila mikangala, nsichi, phaso, mitanda, nkhuhi ngakhalenso matabwa.

MALIRE YA BULOKO YATHU

Malire ya buloko yathu ndiyodziwika bwino chifukwa malo ena yatsata mitsinje mbali zina kumene yadutsa kutali ndi mitsinje kwapakidwa penti mmitengo ndi mmiyala.

Mwachindunji, kumadzulo malire yathu ndi mitsinje wa Dwazi, kumpoto kumene tagundizana ndi buloko ya nyanja malire ndi kampongozi pamene mbali zina tidapaka penti, ndipo mbali imene tagundizana ndi buloko ya Mnguluwe, kumwera, malire ndi mitsinje wa Chasolo pamene mbali zina tidapakanso penti.

UMWINI WA NKHALANGO

Nkhalangoyi ndi ya Boma ndipo ife tikuthandizana nawo kusamalila ndi kugwiritsa bwino ntchito zinthu zopezeka mmenemo malingana ndi mgwirizano umene ulipo.

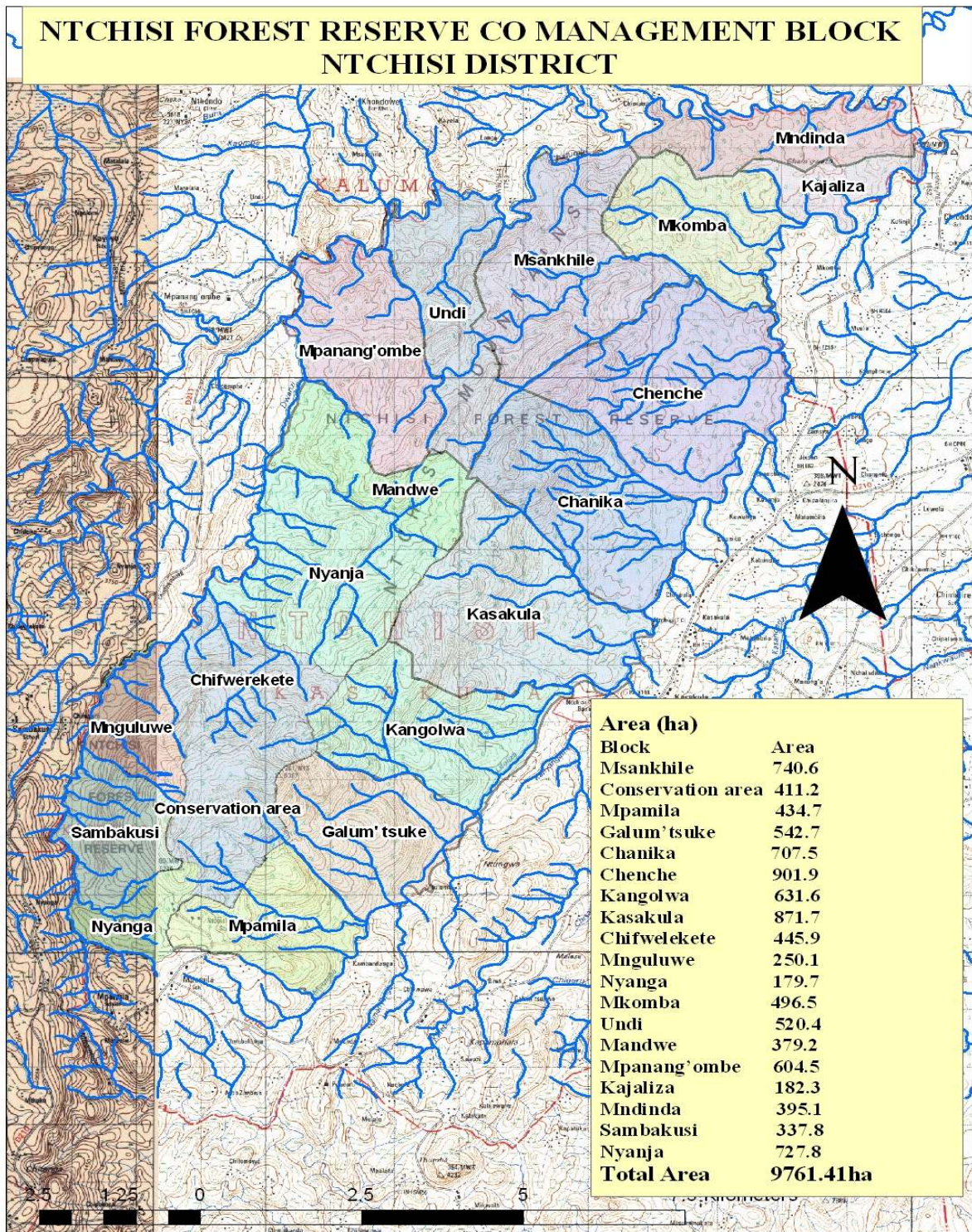
ANTHU OGWIRITSA NTCHITO NKHALANGOYI

Ife anthu akwa Gulupu Chifwerekete ndife eni ake oyambirira kugwiritsa ntchito nkhalangoyi komanso ena amadera ena ndiwololedwa kubwera kudzera mwa akomiti ya Chifwerekete Buloko kudzatenga zimene akufuna
Onse ogwiritsa ntchito nkhalangoyi ayenera kutenga chilolezo kwa akomiti.

NTCHITO ZA NKHALANGO

Ndondomekoyi yapangidwa kuti anthu tizitengako zinthu izi: nkhuni, milimo, matabwa, bowa, mankhwala, matondo, zipatso, udzu, uchi.
Ntchitozina ndi monga: Kuthandiza kuteteza nthaka kuti isakokoloke makamaka mmalo otsetseleka ndi mphepete mwa mitsinje. Komanso kudyetsamo ziweto.

MAPU YA NKHALANGO YA NTCHISI KUSONYEZA BULOKO YA CHIFWEREKETE



ZIGAWO ZA KASAMALIDWE KA NKHALANGO YATHU

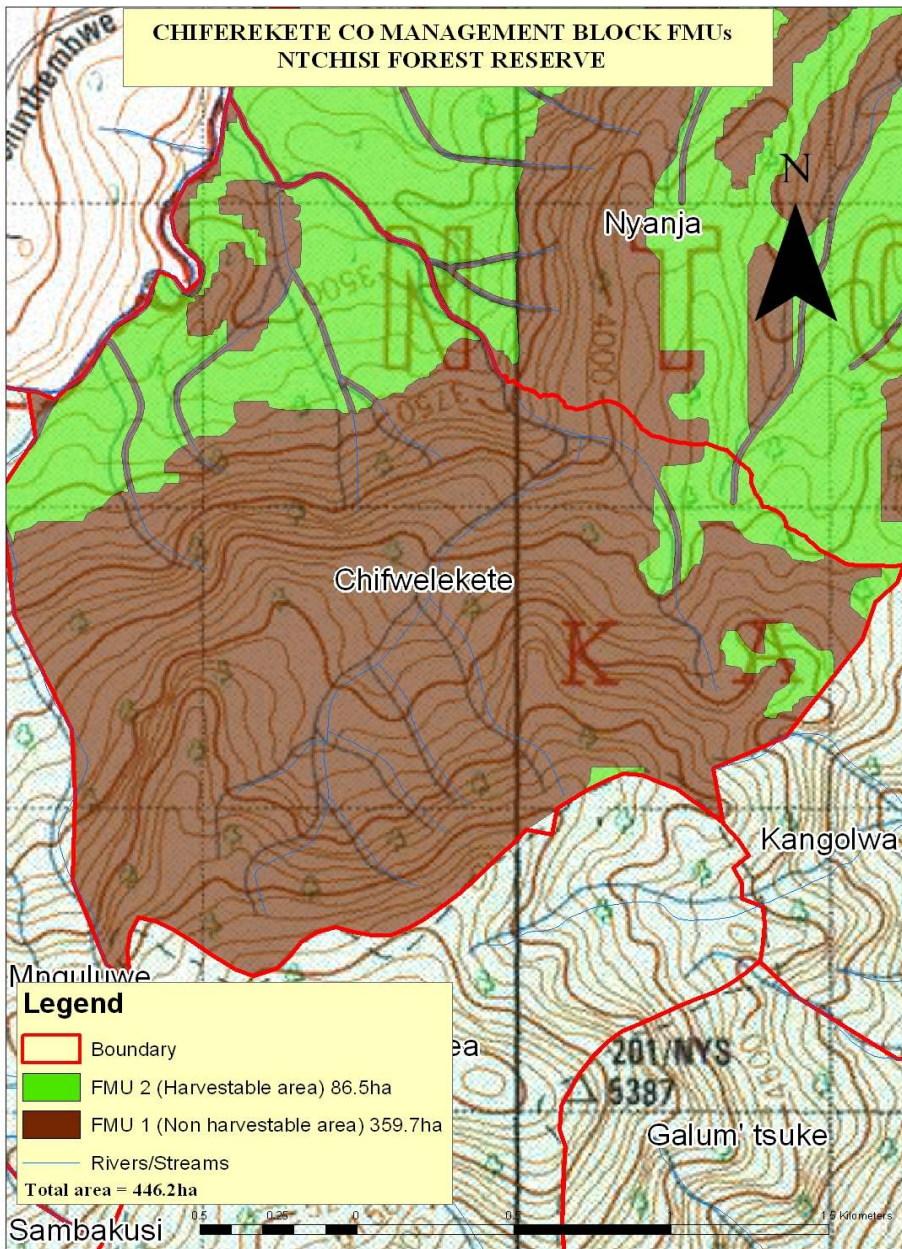
Buloko yathu ili ndi zigawo zenizeni zitatu.

1. CHIGAWO CHOYAMBA: Ichi ndi chigawo chimene chili mphepete mwa mitsinje mamitala 10 mbali zonse ndi malo wotsetseleka woti atetezedwe. Kukula kwa chigawochi ndi pafupifupi 299.11ha.

2. CHIGAWO CHACHIWILI: Ichi ndi chigawo chimene munadulidwa mitengo chifukwa chotola matondo ndipo muli nkhu zambili zowuma. Kukula kwa chigawochi ndi pafupifupi 6ha.

3. CHIGAWO CHACHITATU: Awa ndi malo wotsalawo amene kuli mitengo yambili ya masaizi yosiyanasiyana ndipo kukula kwake ndi pafupifupi 140.79ha.

MAPU YA BULOKO KUSONYEZA ZIGAWO ZA KASAMALIDWE KAKE



1. CHIGAWO

CHOYAMBA: Ichi ndi chigawo chimene chili mphepete mwa mitsinje mamitala 10 mbali zonse ndi malo wotsetseleka woti atetezedwe. Kukula kwa chigawochi ndi pafupifupi 299.11ha.

2. CHIGAWO

CHACHIWILI: Ichi ndi chigawo chimene munadulidwa mitengo chifukwa chotola matondo ndipo muli nkhu zambili zowuma. Kukula kwa chigawochi ndi pafupifupi 6ha.

3. CHIGAWO

CHACHITATU: Awa ndi malo wotsalawo amene kuli mitengo yambili ya masaizi yosiyanasiyana ndipo kukula kwake ndi pafupifupi 140.79ha.

CHOLINGA CHACHIKULU CHA NDONDOMEKO INO

Kusamalila, kuteteza ndikugwiritsa bwino ntchito zinthu zopezeka mmenemo pothandizikira panyumba ndi pochita malonda ndicholinga chotukula miyoyo yathu

ZOLINGA ZING'ONOZING'ONO

- ❖ Kufuna kupezamo nkhu, milimo, matabwa, zogwiritsa ntchito panyumba ndi pochita malonda.

- ❖ Kufuna kuteteza mitsinje kuti isawundirizike ndi malo wotsetsereka kuti nthaka isakokoloke
- ❖ Kufuna kupezamo bowa, mankhwala, zipatso, udzu, matondo ndi uchi wogwiritsa ntchito panyumba ndi pochita malonda.

Cholinga choyamba chikufotokoza za mu chigawochachitatu (FMU 3). Cholinga chachiwiri chikufotokoza za mu chigawo choyamba (FMU 1) pamene cholinga chachitatu chikufotokoza za mzigawo zonse.

**MALAMULO YA KAGWIRITSIDWE NTCHITO KA ZINTHU ZA MNKHALANGO
Malamulowa ndi wokhudzana ndi buloko yonse.**

NAMBALA	LAMULO	CHILANGO
1	Munthu asatenge chinthu cha mnkhalango popanda chilolezo.	Wongotenga adzalipila nkhuku ziwili kapena ndalama zokwana MK800.00
2	Munthu asatenthe mnkhalango popanda chilolezo.	Woteroyo adzalipila mbuzi imodzi kapena ndalama zokwana MK2500.00
3	Munthu saloledwa kusaka mnkhalango	Woteloyo adzalandidwa zida komanso adzalipila nkhuku zisanu ndi imodzi kapena ndalama zokwana MK2400.00
4	Munthu wokhala ndi chilolezo adzatsogozedwa ndi akomiti kapena alangizi	Wopita yekha adzalipila nkhuku zitatu kapena ndalama zokwana MK1200.00
5	Munthu saloledwa kumanga nyumba kapena khola mnkhalango	Wopezeka adzalipila mbuzi ziwili kapena adzalipila ndalama zokwana MK5000.00
6	Munthu saloledwa kulima mnkhalango	Wopezeka adzalipila mbuzi ziwili kapena ndalama zokwana MK5000.00
7	Munthu saloledwa kusintha kapena kuchotsa malile ya BULOKO popanda chilolezo	Wopezeka adzalipila nkhuku ziwili kapena MK800.00
8	Munthu aliyense ayenela kutenga nawo mbali pa ntchito zonse zosamalila BULOKO.	Wosatenga nawo mbali adzalipila nkhuku imodzi kapena MK400.00
9	Munthu saloledwa kudula mtengo mnkhalango popanda chilolezo.	Wopezeka atadula mtengo mopanda chilolezo adzalipira mbuzi imodzi kapena ndalama zokwana K2500.00

DONGOSOLO LA KASAMALIDWE NDI KAGWIRITSIDWE NTCHITO KA ZINTHU ZA MNKHALANGO.

CHIGAWO CHA CHITATU (FMU 3)

Chotengedwa mnkhalango: Nkhuni - chenicheni / key product.

	Milimo - zotsalira ku nkhuhi.
	Matabwa- zotsalira
Mitundu ya mitengo:	Mmbanga, chiyere, mtondo, mvukwe, kadale, sanga, mseza, Katope, mpasa.
	Mitundu ya mitengo ya matabwa – Katope, chiyere, mseza, Mpasa, mpsyipsya, nsenjere, mbawa, mmbanga, msase, Kasokolowe, ntondo, nsolo, msekese, mthethe, kadale.
Kufunidwa kwake:	Kwambiri.
Kupezeka kwake:	Kwambiri
Mavuto:	Moto wolusa umawononga nkhuhi zowuma. Zikwera kuchuluka zimapangitsa kuti nkhuhi zizivuta kutenga. Otola matondo amagwetsa mitengo yayiwisi mwachisawawa Anthu amalowa mnkhalango ndikutenga nkhuhi wopanda Chilolezo. Milimo yambiri ikupezeka malo otsetseleka Anthu amatenga milimo opanda chilolezo Moto olusa umaotcha mitengo ya milimo Anthu kudula mosasamala
Njira zosamalira:	Nkhuhi, milimo, matabwa zidzatengedwa mugawolachitatu Mmakupu wokhazikitsidwa. Malo odulamo mitengo pa chaka ndi 13.6ha mmakupu 6 a 2ha iliyonse ndipo nthawi yoti iperekedwe kuti mitengo ya nkhuhi ikule ndi zaka khumi (10). Makupu adzakhazikitsidwa chaka chilichonse mwezi wa Julaye. Mitengo 60 idzamakidwa kuti idzitsala mukupu iliyonse Kudula mitengo kudzachitika mwezi wa Julaye mpaka mtsogolo. Kutenthera moyambirira kudzachitika poteteza nkhuhi kuti zisaotcheke ndi moto wolusa. Munthu aliyense wokatola nkhuhi ayenera kutenga chilolezo kwa akomiti ndipo ayenera kutsogozedwa ndi akomiti. Nkhuhi zidzatengedwa nthawi zonse kuyambira mwezi wa Julaye 2008 ndipo zikuluzikulu zidzachita mowazidwa pamene Zing’onozing’ono zizidzamangidwa mmitolo. Kudula mosamala osatsakamilitsa mitengo Kutenthera moyambirira Kudula mosan

Matabwa – Munthu akhale ndi chilolezo chochekera matabwa ndipo atsogozedwe ndi akomiti, komanso adule mitengo yokhwima yosachepera 30cm thunthu lake, mosankha. Matabwa adzachekedwa pamene apezeka mmakupu okhazikitsidwa pachaka.

Kukula Kwa malo wogwetsedwa pachaka: 13.6 ha

Opereka chilolezo: Akomiti (Wapampando, mlembi ndi msungi)

zikhala zokagulitsa mlangizi wankulu ayenera kusayinira chilolezo.

Oloedwa kutenga chilolezo: Anthu ozungulira Gulupu Chifwerekete ndi ena.

Mtengo wa chiphaso chotolera Nkhuni :

Zapakhomo ndi K10.mtolo umodzi kapena K300.ngolo imodzi. Zogulitsa ndi K20. Mtolo umodzi kapena K500. Ngolo imodzi.

Milimo: Anthu ozungulira Gulupu Chifwerekete adzalipira K10.00 phaso limodzi.Akwina adzalipira K50.00 phaso limodzi.

Matabwa: Aliyense wocheka matabwa adzalipira K5000.00 pa mtengo umodzi.

Chotengedwa kunkhalango: Bowa

CHIGAWO CHACHITATU (FMU 3)

Mitundu yake: Chisuku, ndelema, chiwere, mphofa, kasanza, chipindi, Kapasa, manyame, mathwe, utali, kanjawala, katerera, Manda.

Kufunidwa kwake: Kwambiri.

Kupezeka kwake: Kwambiri.

Mavuto: Umapezeka kutali.
Ziweto zimawononga bowa.
Kugwetsa mitengo mwachisawawa imene imapangitsa
Kuti bowa umere.
Mvula ikapanikiza bowa umawola msanga.

Njira zosamala: Aliyense wokazula bowa azitenga chilolezo kwa akomiti
Wosadyetsa ziweto malo amodzimidzi
Wokazula bowa azitenga potengera asavunge mmasamba
Wosagwetsa mitengo imene imakonda bowa
mwachisawawa

Kuchuluka Kwa bowa: Bowa uzizulidwa kuyambira mwezi wa December mpaka
Wotengedwa pa chaka April chaka chilichonse ndipo uzizulidwa muzigawo zonse
Mmen ukupezeka. Munthu akatenga chilolezo azikazula
malingana mmene wapezekerera.

Wopereka chilolezo:	Akomiti
Otenga chilolezo:	Anthu wozungulira Gulupu Chifwerekete ndi ena akwina
Mtengo wa chiphaso:	Eni wake tizitenga mwa ulele koma akwina, azilipira ndalama
Chozulira bowa:	Zokwana K50 ngati cholowera onsawerengera kuchuluka kwa bowa wotoledwa.

**CHOTENGEDWA KUNKHALANGO: MATONDO
CHIGAWO CHACHIWILI (FMU 2)**

Mitundu ya matondo:	Mtondo, matondo chitsulo.
Kufunidwa kwake:	Kwambiri zedi
Kupezeka kwake:	Kwambiri.
Mavuto:	Kugwetsa mitengo yambiri potola matondo kuwotcha moto mosasamala
Kasamalidwe kake:	Kutenthera panthawi yake. Kutola matondo okhwima amene agwa wokha Kuyendera mnkhalango kawirikawiri.

Kuchuluka Kwa matondo wotoledwa pachaka:

Mmene angapezekere muzigawo zonse za buloko

Opereka chilolezo:	Akomiti
Olandira chilolezo:	Aeni wake wakwankuno komanso akumadera akutali.

Chilolezo chili motere:	Akuno adzatenga mwaurere Akwina adzalipira ndalama yokwana MK250.00 ngati cholowera osawerengera kuchuluka kwa matondo otoledwa.
--------------------------------	---

**CHOTENGEDWA KUNKHALANGO: MANKHWALA
CHIGAWO CHACHITATU (FMU 3)**

Mitundu ya mitengo ya mankhwala:	Chitedzi chamsanga, m'bwazi, msolo, thombodzi wa Sanga, m'bzoli, chisomo, mpandanjovu,
---	--

Mtukumphako, nafungwe, nkangamila, palijekanthu, Ntondo, mseza, mlungalunga, thupa, mkulasinga, Kaweleka, mkumbatira

Kufunika kwake: Kwambiri.

Kupezeka kwake: Kwambiri

Mavuto ake: Moto wolusa umawononga zitsamba zonse
Kukumba mankhwala mosasamala monga kugwetsa mitengo
Kusema mankhwala mtengo wonse
Kupulula masamba ambiri kumtengo umodzi

Kusamala kwake: Kutentha moto munthawi yake udzu usanaumitsitse
Masamba asapululidwe ambiri kumtengo umodzi
Osagwetsa mtengo wonse pofuna mankhwala
Kukumba mankhwala mbali imodzi yamtengo
Mankhwala adzatengedwa mzigawo zonse za Buloko kuyambira June mpaka mtsogolo

Kuchuluka Kwa mankhwala otengedwa pachaka:

Mmene apezekera

Wopereka chilolezo: Akomiti

Wolandira chilolezo: Munthu aliyense wofuna kupeza mankhwala

Mtengo wachilolezo: Anthu amu VDC ulele
Anthu akwina adzalipira MK250.00 chipondamthengo.

**CHOTENGEDWA KUNKHALANGO: ZIPATSO
CHIGAWO CHACHITATU (FMU3)**

Mitundu yamitengo yazipatso: Msuku, Mngokhomwala, Nthundu, Nthudza, Kasokolowe, Yembe yembe, Mvira, mtowo,

Kufunika kwake; Kwambiri

Kupezeka kwake:	Kwambiri
Mabvuto ake:	(a). Khwera zimadya zipatso zaziwisi. (b). Moto wolusa umaononga maluwa azipatso ©. Kudula mitengo yazipatso mwachisawawa.
Kasamalidwe kake:	(a). Osagwetsa mtengo potola zipatso. (b). Kutenthera nkhalango panthawi yake. ©. Kupukusa potola zipatso. (d). Kutenga chotengera pokatola zipatso. (e). Aliyense okatola zipatso atenge chilolezo kwa akomiti. (f). Zipatso zidzatoledwa mzingawo zonse za boloko kuyambira Juni mpaka kutsongolo
Kuchuluka Kwa zipatso zotoledwapachaka:	Munthu akatenga chilolezo atole malinga ndi mene zapezekela
Wopereka chilolezo:	Akomiti
Wolandira Chilolezo:	Aliyense.
Mtengo wachilolezo:	Wakonkuno ulere wakwina MK10.00 yolowera osawerengera kuchuluka kwa zipatso zotoledwa

**CHOTENGEDWA KUNKHALANGO: LUZI
CHIGAWO CHACHITATU (FMU 3)**

Mitundu:	Mombo,kamphoni,msenga,
Kufunika kwake:	Kwambiri
Kupezeka:	Kwambiri
Mavuto:	Kukolola mosasamala Moto wolusa umaononga mitengo ya luzi.

Njira zosamalira

- Kumenya luzi la mmwamba ndi kuzotsalira za ku milimo.
- Kutenthera kusanaumitsitse

Kukula kwa malo kapena Kuchuluka kwa luzi pa chaka

- Momwe lapezekera

Opereka chilolezo: Akomiti

Otenga chilolezo : Aliyense

Mtengo wa chilolezo: Akonkuno azilipira ndalama zokwana K100.00 ngati yolowera.

K200.00 kwa anthu onse ochokera kwina ngati yolowera.

CHOTENGEDWA KU NKHALANGO :UCHI

CHIGAWO CHACHITATU (FMU 3).

Mitundu: Uchi wa Msanga.

Kufunika kwake: Kwambiri

Kupezeka: Pang'ono

Mavuto:

- Kuchepa kwa njuchi.
- Kukolola moyipa
- Moto umaononga mitengo ndi njuchi.

Njira zosamalira

- Pofula osatenga moto woyaka.
- Wofuna kuweta njuchi ayike ming'oma ya makono ndipo akhale ndi chilolezo kuchokera kwa akomiti
- Ming'oma idzapachikidwa mu gawo la chitatu la buloko ndipo nthawi iliyonse kuyambira Julaye mpaka mtsogolo.

Kukula kwa malo kapena Kuchuluka kwa ming'oma yoyikidwa pa chaka

- Amene watenga chilolezo apachike ming'oma mmene angathele

Opereka chilolezo: Akomiti

Otenga chilolezo:Wozungulira Chifwerekete Buloko

Mtengo: K300.00 pa mng'oma pa chaka.

NDONDOMEKO YAKAGWIRIDWE KANTCHITO ZOSAMALIRA BULOKO

NO.	NTCHITO	ZIPANGIZO	KALOZERA	WOCHITA	NTHAWI
1	Kukonza malire wokhazikika	Penti Bulashi Zikwanje Silasha	Malire wokhazikika wopakidwa ndi penti.	Mafumu, Akomiti Alangizi	Kuyambirira kwa mwezi wa Juni
2	Kuyendera	Zikwanje Silasha	Malipoti	Akomiti Alangizi	Kuyambira mwezi wa Juni

				Mafumu Anthu amudzi	kupitirira mtsongolo
3	Kutenthera	Moto Zikwanje Silasha Keni Madzi	Malo opaza moto ndi ziphukira	Akomiti Alangizi Mafumu Anthu amudzi	Kuyambira Juni mpakana May chaka china
4	Kuchita misonkhano yazankhalango	Zolemba Makope	Malipoti/malekodi	Akomiti Alangizi Mafumu Anthu amudzi	Kuyambira Juni mpakana May chaka china
5	Kupereka zilolezo	Zolemba Malisiti Mabuku	Malekodi	Akomiti Alangizi	Kuyambira Juni mpakana May chaka china
6	Kulemba malipoti ndu kupereka koyenerera monga kuofesi, Bungwe loyang'ana nkhalango yonse	Mapepala Zolemba	Lipoti	Akomiti Mafumu	Kuyamba June mpakana Maychaka china
7	Kutola matondo	Ndowa Nthumba	Nambala yandowa ndi matumba otengedwa	Akomiti Mafumu Anthu amudzi	November mpaka Decembala
8	Kutola nkhuhi	Luzi Nkhwangwa Zikwanje	Nambala yamitolo yotoledwa	- Akomiti - Alangizi	Kuyambira June mpaka May chaka china
9	Kutola zipatso	Ndowa Thumba	Nambala yandowa ndi matumba yotoledwa zipatso	- Akomiti - Mafumu - Anthu amudzi	Kuyambira June mpaka May chaka china
10	Kuzula bowa	Ndowa Thumba Dengu	Nambala ya ndowa ndi matumba wozulidwa ndi bowa	- Akomiti - Mafumu - Anthu amudzi	Kuyambira Desembala mpaka April
11	Kumweta udzu	Chisikiro Chikwanje Khasu	Nambala yamitolo yaudzu	- Akomiti - Mafumu - Anthu amudzi	Kuyambira Juni mpaka Seputebala
12	Kukumba makhwala	Makasu Zikwanje Thumba	Nambala yazikunje zamankhwala otengedwa	- Akomiti - Mafumu - Anthu amudzi	Kuyambira Juni mpaka May chaka china
13	Kufula uchi waming'oma	Ndowa Mvukuto	Nambala yandowa	- Akomiti - Mafumu	Pakatha miyezi inayi iri yonse

		Zobvala zofulira uchi	zofulidwa zauchi	- Anthu amudzi - Alangizi	
14	Kuunika malamulo	Zolemba Makope Mapepala Chakudya	Maliupoti Malekodi	- Akomiti - Mafumu - Anthu amudzi - Alangizi	Kumapeto kwa Juni kulikonse
15	Kukhazikitsa tizigawo (makupu) todulamo mitengo	Zikwanje, masilasha, penti, makope, zolemba, chakudya, mapepala.	Nambala ya tizigawo tokhazikitsidwa (makupu)	- Akomiti - Mafumu - Anthu amudzi - Alangizi	Mwezi wa Julaye.

NDONDOMEKO YOYENDERA KUNKHALANGO

MALO	OCHITA	ZIPANGIZO	NTHAWI
Ogwetsedwa mitengo yamatondo	Kafulu ndi anthu awo ndi alangizi ndi akomiti	Zikwanje Zolemba Makope	Juni sabata yoyamba
Kumwala wamphasa	Chifwerekete I ndi anthu awo ndi alangizi ndi akomiti	Zikwanje Zolemba Makope	Sabata yachiwiri yaJuni

Kampongozi	Chifwerekete II ndi anthu awo ndi alangizi ndi akomiti	Zikwanje Zolemba Makope	Sabata yachitatu ya Juni
Chasolo mpakana ku Firebreak	Mawere II ndi anthu awo ndi alangizi ndi akomiti	Zikwanje Zolemba Makope	Sabata yachinayi ya Juni
Mitsinje	Mtuluka ndi anthu awo ndi alangizi ndi akomiti	Zikwanje Zolemba Makope	Sabata yoyamba ya Julaye
Kumwalawamphasa	Kafulu ndi anthu awo ndi alangizi ndi akomiti	Zikwanje Zolemba Makope	Sabata yachiwiri ya Julaye
Kampongozi	Chifwerekete I ndi anthu awo ndi alangizi ndi akomiti	Zikwanje Zolemba Makope	Sabata yachitatu ya Julaye
Chasolo mpakana ku Firebreak	Chifwerekete II ndi anthu awo ndi alangizi ndi akomiti	Zikwanje Zolemba Makope	Sabata yachinayi Julaye
Mitsinje	Mawere II ndi anthu awo ndi alangizi ndi akomiti	Zikwanje Zolemba Makope	Sabata yoyamba ya Ogasiti
Kumwalawamphasa	Mtuluka ndi anthu awo ndi alangizi ndi akomiti	Zikwanje Zolemba Makope	Sabata yachiwiri ya Ogasiti
Mitsinje	Chifwerekete I ndi anthu awo ndi alangizi ndi akomiti	Zikwanje Zolemba Makope	Sabata yachitatu ya Ogasiti
Malo otsetsereka ndi mwalwanjuchi	Kafulu ndi anthu awo ndi alangizi ndi akomiti	Zikwanje Zolemba Makope	Sabata yachinayi Ogasiti
Chasolo mpakana ku Firebreak	Chifwerekete II ndi anthu awo ndi alangizi ndi akomiti	Zikwanje Zolemba Makope	Sabata yoyamba ya Seputembala
Kumwalawamphasa	Mawere II ndi anthu awo ndi alangizi ndi akomiti	Zikwanje Zolemba Makope	Sabata yachiwiri ya Seputembala
Kampongozi	Mtuluka ndi anthu awo ndi alangizi ndi akomiti	Zikwanje Zolemba Makope	Sabata yachitatu ya Seputembala
Chasolo mpakana ku Firebreak	Chifwerekete I ndi anthu awo ndi alangizi ndi akomiti	Zikwanje Zolemba Makope	Sabata yachinayi ya Seputembala
Ogwetsedwa mitengo yamatondo	Kafulu ndi anthu awo ndi alangizi ndi akomiti	Zikwanje Zolemba Makope	Sabata yoyamba ya Okotobala
Kampongozi	Chifwerekete II	Zikwanje	Sabata yachiwiri ya

	ndi anthu awo ndi alangizi ndi akomiti	Zolembera Makope	Okotobala
Chasolo mpakana ku Firebreak	Mawere II ndi anthu awo ndi alangizi ndi akomiti	Zikwanje Zolembera Makope	Sabata yachitatu ya Okotobala
Kampongozi	Chifwerekete I ndi anthu awo ndi alangizi ndi akomiti	Zikwanje Zolembera Makope	Sabata yachinayi ya Okotobala
Ogwetsedwa mitengo yamatondo	Kafulu ndi anthu awo ndi alangizi ndi akomiti	Zikwanje Zolembera Makope	Sabata yoyamba ya Novembala
Kumwalawamphasa	Mtuluka ndi anthu awo ndi alangizi ndi akomiti	Zikwanje Zolembera Makope	Sabata yachiwiri ya Novembala
Malo otsetsereka ndi mwalwanjuchi	Mawere II ndi anthu awo ndi alangizi ndi akomiti	Zikwanje Zolembera Makope	Sabata yachitatu ya Novembala
Chasolo mpakana ku Firebreak	Chifwerekete II ndi anthu awo ndi alangizi ndi akomiti	Zikwanje Zolembera Makope	Sabata yachinayi ya Novembala
Ogwetsedwa mitengo yamatondo	Chifwerekete I ndi anthu awo ndi alangizi ndi akomiti	Zikwanje Zolembera Makope	Sabata yoyamba ya Desembala
Kampongozi	Kafulu ndi anthu awo ndi alangizi ndi akomiti	Zikwanje Zolembera Makope	Sabata yachiwiri ya Desembala
Chasolo, Ogwetsedwa mitengo yamatondo	Mtuluka ndi anthu awo ndi alangizi ndi akomiti	Zikwanje Zolembera Makope	Sabata yachitatu ya Desembala
Kumwalawamphasa mpakana ku Firebreak	Chifwerekete II ndi anthu awo ndi alangizi ndi akomiti	Zikwanje Zolembera Makope	Sabata yachinayi ya Desembala

DONGOSOLO LOCHITIRA KALONDOLONDO

CHOLINGA	ZOMWE TINGADZAYESE	KAYESEDWE	KALOZERA	OCHITA	ZIPANGIZO	NTHAWI
Kuteteza mmitsinje ndi malo otsetseleka	- Kupezeka kwa mitengo m'mbali mwa msinje. - Kukhala ndi	Kuwona	Kupezeka kwa madzi	-Akomiti - Alangizi - Anthu Amfumu	- Zikwanje - Silasha	Chaka chili chonse

	madzi osaphwa					
Kufuna kupezamo bowa, mankhwala, zipatso, udzu, matondo, ndi uchi wogwiritsa ntchito panyumba ndipochita malonda	Kupezaka kwa bowa, mankhwala, zipatso, udzu, matondo ndi uchi	Kuwona	Nambala yamatumba otengedwa	-Akomiti - Alangizi - Anthu Amfumu	- Zikwanje - Silasha	Chaka chili chonse kuyambira Juni
Kufuna kupezamo nkhuni zogwiritsa ntchito panyumba ndipo chita malonda	Kupezeka kwa nkhuni	Kuwona	Kuchuluka kwa ndalama zopezeka pogulitsa nkhuni	-Akomiti - Alangizi - Anthu Amfumu	- Zikwanje - Silasha - Nkhwangwa	Chaka chili chonse kuyambira Juni

DONGOSOLO LAZACHUMA

Ndalama zonse zopekedwa ku komiti zidzagwiritsidwa ntchito malinga ndi malamulo oyendetsera gulu lathu

MALAMULO OYENDETSERA BULOKO YA CHIFWEREKETE

CHOLINGA CHAGULU:

Kusamalira Buloko yaChifwerekete mothandizana ndi azankhalango ndi kugwiritsa bwino ntchito zithu zopezeka mmenemo.

MNDANDANDA WAGULU

Gulu lidzikhala ndi amaudindi khumi (10) monga wapampando ndi wachiwiri wake, mlembi ndi wachiwiri wake, msungi ndi makomiti membala asanu. Mudzikhwalanso mafumu awa: Chifwerekete I, Chifwerekete II, Mawere II, Mtuluka, Kafulu, ndi agulupu achifwerekete. Mudzikhwalanso anthu onse ozungulira midzi yamwa agulupu Chifwerekete.

WAPAMPANDO NDI WACHIWIRI WAKE

ZOYENEREZA

- Akhale wachikondi
- Wolimbikira ntchito yankhalango
- Wodziwa kulemba ndi kuwerengera
- Wokhazikika kudera
- Akhale wachilungamo osati wakatangale

NTCHITO ZAWO NDI MAUDINDO AWO

- Kutsongolera gulu pakagwiridwe kantchito
- Kukhometsa msonkhano
- Kulimbikitsa gulu
- Kuyang'ana mofooka
- Kuonetsetsa kuti malamulo akugwira ntchito

MLEMBI NDI WACHIWIRI WAKE

ZOYENEREZA

- Akhale wodziwa kulemba ndi kuwerenga
- Akhale wolimbikira ntchito
- Akhale nzika yakudera

NTCHITO NDI MAUDINDO AWO

- Kulemba makalata wodziwitsa anthu zamsonkhano
- Kulemba ndikusunga zimene akambirana pamsonkhano
- Kulemba katundu wolowa ndi wotuluka
- Kupereka lipoti lazochitika zagulu

MSUNGI

ZOMUYENEREZA

- Akhale ndi chilungamo
- Akhale ndi malo abwino osungira katundu
- Akhale wodziwa kulemba ndi kuwerenga
- Akhale nzika yakudera

NTCHITO NDI MAUDINDO AKE

- Kusunga katundu wagulu
- Kulemba katundu yemwe walandira ndi yemwe watuluka

- Kupereka lipoti wakatundu mmene akugwirira ntchito

MAKOMITI MEMBALA (APHIKA NKHANI)

ZOWAYENEREZA

- Akhale wodziwa kulankhula
- Akhale nzika yakudera
- Akhale wakhalidwe labwino

NTCHITO NDIMAUDINDO AWO

- Kuweruza milandu
- Kuyang'ana maudindo mmene akugwirira ntchito zawo.
- Kutumikira mugulu

NTHAWI YOKHALIRA PAUDUNDO

- Nthawi imene gulu linagwirizana pamsonkhano wamidzi yonse ya Gulupu Chifwerekete yoti munthu adzikhala paudindo ndi zaka zitatu (3) basi.
- Kumapeto kwachaka cha chitatu chili chonse agulupu ayenera kuitanitsa msonkhano wa buloko yonse ndi kupangitsa masankho ena ndipo masankho ake adzikhala oponya voti munthu modzi adziponya voti imodzi paudindo ulionse.
- Agulupu ali ndi ufulu opangitsa masankho mwadzidzi ngati udindo wina ulibe munthu kapena ngati komiti yathetsedwa mwadzidzidzi pazifukwa.

ZOMWE ZINGAMUCHOTSETSE MUNTHU PAUDINDO

- Katangale/kuba
- Kusalemekeza anthu
- Osalimbikira ntchito zoikika mudondomeko yosamalira buloko.
- Wankhaza.

MPHAMVU ZAAKOMITI

- Kumulipitsa munthu olakwa potsata malamulo
- Kulimbikitsa mgwirizano pagulu
- Kulandira dipo laolakwitsa
- Kuonetsetsa kuti anthu akugwira ntchito zoikika mndodomeko yosamalira buloko

KATHETSEDWE KA KOMITI

- Pakatha zaka zitatu agulupu adziyitanitsa msonkhano wagulu lonse kumapeto kwachaka chachitatu chili chonse kupangitsa masankho ena.
- Ngati komiti yasokoneza katundu wagulu iyenera ithetsedwe.

ZOMUYENEREZA MUNTHU KUKHALA MEMBALA WACHIFWEREKETE BULOKO

- Akhale nzika yamderamo
- Osamwa mowa mwauchidakwa
- Wachikondi ndi wosachita katangale.

- Kalowedwe kagulu ndi kaulele

ZOMUCHOTSETSA MUNTHU KUKHALA MEMBALA

- Wakhalidwe loipa
- Osalimbikira ntchito

UFULU WOCHITA APILO PAMILANDU YOPEZEKA MUGULU

- Munthu kapena anthu amene apatsidwa chingamulo pa mlandu ali ndi ufulu wokusuma kubwalo lina ngati sanakhutitsidwe motere: poyamba akachoka kwa akomiti akhoza kupita kwa amfumu, kenako kwa a Gulupu, kwa T/A, mpakana ku khoti
- Munthu kapena anthu wolakwirawo akhoza kubwezeretsedwapo ndi amfumu, a Gulupu, a T/A, Khoti ngati awona kuti mpoyenerera kutero, ngati sipoyenerera adzachotsedwa ndithu mgulu.

NTCHITO ZA GULU LONSE

- Kugwira ntchito zoyikika mundondomeko yosamalira Buloko
- Kuyang'anira Buloko
- Kupanga ndi kuwunika malamulo yoyendetsera gulu.
- Kusankha anthu woti akhale mmaudindo

MISONKHANO

- Akomiti adzichita misonkhano kawiri pamwezi ndipo zokambirana ziyambike akafikapo anthu asanu.
- Msonkhano wa gulu lonse udzichitika kamodzi pa mwezi anthu akafikapo makumi awiri(20) zokambirana ziyambike.

MALAMULO YA KAGWIRITSIDWE NTCHITO KA ZINTHU ZA MNKHALANGO

NAMBALA	LAMULO	CHILANGO
1	Munthu asatenge chinthu cha mnkhalango popanda chilolezo.	Wongotenga adzalipila nkhuku ziwili kapena ndalama zokwana MK800.00
2	Munthu asadyetse ziweto mnkhalango popanda chilolezo.(Ngombe imodzi chiphaso chake ndi MK200.00)	Wopanda chilolezo adzalipila nkhuku imodzi kapena MK400.00
3	Munthu wokadyetsa ziweto asatenge zida komanso asadyetse malo amodzimidzi	Akalakwila adzalandidwa zida komanso kulipila ndalama zokwana MK200.00

4	Munthu asatenthe mnkhalango popanda chilolezo.	Woteroyo adzalipila mbuzi imodzi kapena ndalama zokwana MK2500.00
5	Munthu akatenga chilolezo chotolela nkhuu atole zouma.	Wolakwila adzalipila nkhuu ziwili kapena MK800.00
6	Munthu asamenye luzi mnkhalango popanda chilolezo.	Woteloyo adzalipila nkhuu ziwili kapena MK800.00
7	Munthu saloledwa kusaka mnkhalango	Woteloyo adzalandidwa zida komanso adzalipila nkhuu zisanu ndi imodzi kapena ndalama zokwana MK2400.00
8	Munthu akakhala ndi chilolezo chotolela matondo atole yogwa yokha kapena kupukusa, osagwetsa mtengo.	Wogwetsa mtengo adzalipila mbuzi imodzi kapena ndalama zokwana MK2500.00
9	Munthu wokhala ndi chilolezo adzatsogozedwa ndi akomiti kapena alangizi	Wopita yekha adzalipila nkhuu zitatu kapena ndalama zokwana MK1200.00
10	Munthu akhala ndi chilolezo chotolela zipatso atole zogwa zokha kapena kupukusa asagwetse mtengo.	Wogwetsa mtengo adzalipila mbuzi imodzi kapena ndalama zokwana MK2500.00
11	Munthu wofuna kufula uchi akhale ndi chilolezo motsogozedwa ndi akomiti ndi alangizi	Wophwanya lamuloli adzalipila mbuzi imodzi kapena ndalama zokwana MK2500.00
12	Munthu wofuna kuyika ming'oma mnkhalango ayenela kudula chiphaso chokwana MK300.00 pa mng'oma umodzi pachaka	Wophwanya lamuloli adzalandidwa ming'oma yake yonse komanso adzalipila ndalama zokwana MK500.00
13	Munthu akatenga chilolezo chokapeza mankhwala mnkhalango adzayenela kutengako pang'ono pamtengo	Wophwanya lamuloli adzalandidwa mankhwala komanso adzalipila mbuzi imodzi kapena ndalama zokwana MK2500.00
14	Munthu asacheke matabwa mnkhalango popanda chilolezo	Wopezeka adzalipila MK50,000.00
15	Munthu saloledwa kumanga nyumba kapena khola mnkhalango	Wopezeka adzalipila mbuzi ziwili kapena adzalipila ndalama zokwana MK5000.00
16	Munthu saloledwa kulima mnkhalango	Wopezeka adzalipila mbuzi ziwili kapena ndalama zokwana MK5000.00
17	Munthu saloledwa kusintha kapena kuchotsa malile ya BULOKO popanda chilolezo	Wopezeka adzalipila nkhuu ziwili kapena MK800.00
18	Munthu aliyense ayenela kutenga nawo mbali pa ntchito zonse zosamalila BULOKO.	Wosatenga nawo mbali adzalipila nkhuu imodzi kapena MK400.00

KAYENDETSEDWE KA ZA CHUMA

- Msungi ndi amene adzisunga ndalama zonse.
- Ndalama zikapezeka, zina zidzikasungidwa ku Banki imene itsegulidwe ndipo wosayinira wake ndi : wapampando, mlembi ndi msungi.

KAPEREKEDWE KA MADIPO

- Munthu amene wapezeka ndi mlandu sadzigwira nawo ntchito mugulu kufikira atalipira mlanduwo.
- Zolipira zonse zidziperekedwa kwa msungi ndipo chikakhala chiweto chidzigulitsidwa ndi akomiti ndipo ndalamazo ziperekedwe kwa msungi.

KASUNGIDWE KA MALEKODI

CHIFWEREKETE BULOKO YONSE IDAGWIRIZANA KUTI IDZISUNGA MALEKODI MOTERE:

- Buku la katundu wolowa ndi wotuluka losungidwa ndi msungi
- Buku la malisiti ndi chilolezo losungidwa ndi msungi
- Buku lolebamo ndalama za gulu losungidwa ndi msungi
- Buku lolebamo mayina ya wanthu wokayendera ku nkhalango losungidwa ndi mlembi
- Buku losainamo alendo wodzawona ntchito mmene ikuyendera losungidwa ndi mlembi
- Buku lolebamo chiwerengero cha wanthu a Chifwerekete Buloko losungidwa ndi mlembi
- Buku lolebamo zokambirana za pa msonkhano losungidwa ndi mlembi
- Buku la milandu losungidwa ndi mlembi

KAYENDETSSEDWE KA ZA NGONGOLE

- Ndalama za gulu zitha kubwereketsedwa kwa munthu /gulu lofuna kuchita bizinesi koma akhale wa Chifwerekete Buloko
- Chiwongola dzanja ndi 25% ndipo munthu ayenera kuyamba kukongola K1000.00 koma ayenera kubweza pakatha mwezi umodzi.

KUSASIYANA MUGULU PA CHILICHONSE

- Padzakhala kufanana pochita zinthu mugulu pakati pa ami ndi abambo kuyambira pogwira ntchito, kasankhidwe ka maudio komanso kagawanidwe ka phindu.
- Sipadzakhala kukondera mbali pochita zinthu.

KUWUNIKANSO MALAMULO

- Malamulo adzawunikidwa chaka chilichonse
- A Gulupu adziyitanitsa msonkhano wa gulu lonse kuti malamulo awunikidwe kumapeto kwa chaka chilichonse

KAGAWANIDWE KA PHINDU

Phindu lopezeka mnkhalango limene tidzigwiritsa ntchito ndi ili:

- Nkhuni
- Milimo.
- Matabwa.
- Bowa
- Zipatso
- Mankhwala
- Matondo
- Udzu

NKHUNI

- Banja lililonse lidzikatenga chilolezo kwa akomiti ndipo liyenera kulipira K10.00 pa mtolo umodzi kapena K300.00 pa ngolo imodzi.
- Zogulitsa banja lili lonse liyenera kupereka K20.00 pamtolo umodzi kapena K500.00 pangolo imodzi.
- Ndalama zonse zopezeka zidzikasungidwa ku Banki mu buku la Chifwerekete.
- Ndalamazo ntchito zake ndi izi: Kugwirira ntchito za chitukuko chamu Chifwerekete V.D.C., kuthandiza kusamalira Chifwerekete Buloko, kuthandiza magulu ya mabizinesi yam u Buloko powabwereketsa, kuthandiza akomiti kuti athe kuyendetsa bwino gulu (monga kugulira mabuku, zakudya panthawi yokumana ndizina zotere,) kuthandiza kuti gulu lithe kupeza luso (maphunziri) la za nkhalango.

BOWA, ZIPATSO, MANKHWALA, MATONDO, UDZU

Banja lili lonse lidzikatenga chilolezo mwaulele chokatengera zinthu zimenezi ndipo akwina azilipira motere:

- Bowa ndi K50.00 yolowera
- Zipatso ndi K10.00 yolowera
- Mankhwala ndi K250.00 chipondamthengo
- Matondo ndi K250.00 yolowera
- Udzu ndi K10.00 yolowera

Ndalama zake zidzagwira ntchito ngati zalembedwera (muntundamo) pa zankhuni

KUYAMBA KUGWIRA NTCHITO KWA MALAMULO

Malamulo ya Chifwerekete Buloko adzayamba kugwira ntchito pa 1st Juni, 2008.

OSAYINIRA

WAPAMPANDO.....TSIKU

A GULUPU A CHIFWEREKETE.....TSIKU

GOGO CHALO NTHONDO.....TSIKU

BWANA MKUBWA WA ASSMBLYTSIKU